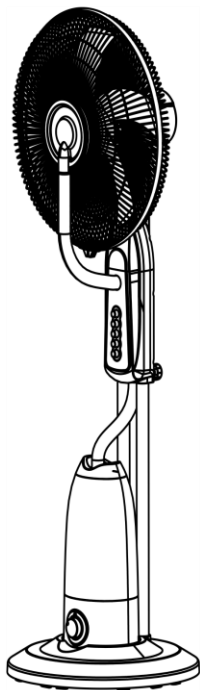




IN221000625V01\_UK

**824-010V70**



Mist Fan, 16 Inch 230V,50Hz, 90W



**EN\_IMPORTANT, RETAIN FOR FUTURE REFERENCE: READ CAREFULLY.**

**FR\_IMPORTANT: A LIRE ATTENTIVEMENT ET À CONSERVER POUR CONSULTATION ULTÉRIEURE.**

**ES\_IMPORTANTE, LEA Y GUARDE PARA FUTURAS REFERENCIAS.**

**PT\_IMPORTANTE, RETER PARA REFERÊNCIA FUTURA: LEIA ATENTAMENTE.**

**DE\_WICHTIG! SORGFÄLTIG LESEN UND FÜR SPÄTER NACHSCHLAGEN AUFBEWAHREN.**

**IT\_IMPORTANTE! CONSERVARE IL PRESENTE MANUALE PER FUTURO RIFERIMENTO E LEGGERLO ATTENTAMENTE.**

## INSTRUCTION FOR USE

Please read these Operating Instructions carefully before connecting your device to the mains, in order to avoid damage due to incorrect use. Please pay particular attention to the safety information. If you pass the device on to a third party, these Operating Instructions must also be handed over.

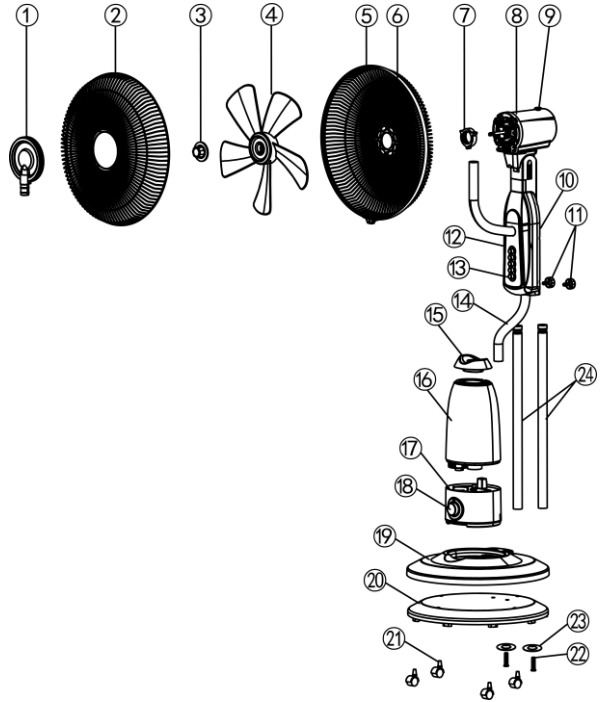
**WARNING**-When using electrical appliances, basic safety precautions should always be followed to reduce the risk of fire, electrical shock and personal injury.

## SAFETY INFORMATION

1. Incorrect operation and improper handling can lead to faults on the device and injuries to the user.
2. In the event of improper use or incorrect handling, no liability can be accepted for any damage that may occur.
3. Before you put the plug into the socket, please check that the type of current and mains voltage correspond to the instructions on the rating label on the underside of the appliance.
4. Do not immerse the unit or mains plug in water or other liquids. There is danger to life due to electric shock! However, if this should occur, remove the mains plug immediately and then have the unit checked by an expert before using it again.
5. Do not operate the device if the mains cable or the mains plug show signs of damage, if the device has fallen on the floor or has been otherwise damaged. In such cases take the device to a specialist for checking and repair, if necessary.
6. Never remove the mains plug from the socket by pulling on the mains cable, or with wet hands.
7. Ensure that the mains cable does not hang over sharp edges or allow it to become trapped.
8. Keep the appliance away from humidity, and protect from splashes.
9. Keep the appliance away from hot objects (e.g. hotplates) and open flames.
10. If the supply cord is damaged, it must be replaced by the manufacturer, its service agent or similarly.

11. This appliance can be used by children aged from 8 years and above and persons with reduced physical, sensory or mental capabilities or lack of experience and knowledge if they have been given supervision of instruction concerning use of the appliance in a safe way and understand the hazards involved.
12. Children shall not play with the appliance.
13. Cleaning and user maintenance shall not be made by children without supervision.
14. Keep the appliance and its cord out of reach of children of less than 8 years.
15. The appliance should not be operated by means of an external timer – switch or by means of a separate system with remote control not originally belonging to this appliance.
16. Use the appliance on a flat, dry and heat resistant surface.
17. This appliance is intended to be used in households and similar applications.
18. Never leave the device unattended during use.
19. Do not store or operate the appliance in the open air.
20. Keep the appliance in a dry place, inaccessible to children (in its packaging).
21. Never put fingers or any other objects through the grilles (fan guards) when the fan is running.
22. The appliance must be assembled completely before use.
23. Watch out for long hair! It can be caught in the fan owing to the air turbulence.
24. Do not point the air flow to the people for a long time.
25. Ensure that the fan is switched off from the supply mains before removing the guard.

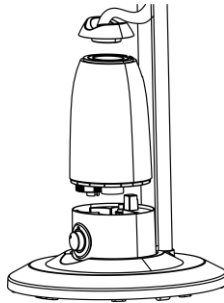
1. Misting Board
2. Front Grill
3. Blade Lock Nut
4. Blade
5. Back Grill
6. Grid Ring
7. Grill Lock Nut
8. Motor Shell
9. Oscillation Button
10. Back Shell
11. Nut
12. Panel
13. Switch
14. Misting Tube
15. Top Cap
16. Water Tank
17. Tank Bracket
18. Knop
19. Base
20. Weight Rubber
21. Wheels
22. Screw
23. Gasket
24. Support Tube



1. Insert the support tube (24) into the base (19), and tight up by the screw (16) and the gasket (23).
2. Insert the main body into the support tube (24), and tight up by the nut (11).
3. Insert the 4pcs wheels (21) into the weight rubber (20).
4. Put the back grill (5) on the motor shell (8), and tighten up by the grill lock nut (7) to the motor cover. Insert the blade (4) on the motor shaft, and tighten up by the blade lock nut (3).
5. Fixed the misting board (1) on the front grill (2), and tight up by misting board lock screws.
6. Connection the front grill (2) and back grill (5) by grid ring (6), and tighten up by grill lock nut .
7. Insert the misting tube (14), connection to the misting board (1)

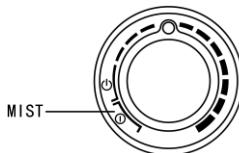
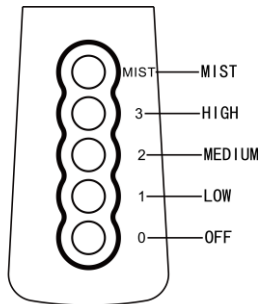
### Fill the water tank:

Unscrew the valve cover to open the tank turning it anticlockwise, fill the tank with cold and clean water making sure not to overfill it. To close the tank, screw the valve cover back on securely turning it clockwise.



### ATTENTION!

- Make sure the product is unplugged from the mains before filling or refilling the water tank.
- Only use water in the water tank. Do not add any chemicals, oils or other additives.
- Only use cold or lukewarm water in the water tank. The water must not be warmer than 40°C.



**Control panel**

**SPEED Button :**

- There is 3 speed of the fan for choose:
- 0 - It's the power offer button to stop the fan working
- 1- Low
  - 2- Medium
  - 3- High

**MIST Button :**

- Put some water into the water tank (16), and tighten up the lock nut. And put it back to the fan.
- When the mist function is selected the water indicator light on in blue color .
- If the water tank (16) is empty (No water), the indicator light will be light on in red color.

Noted: The mist function and speed function can be worked independent, or together.

**OSCILLATION Button :**

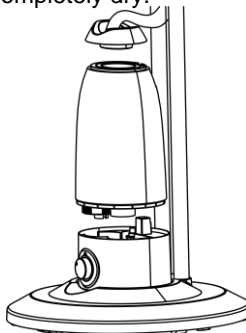
- Press the oscillation button (9) to activate the automatic oscillation from right to left.
- Handup the oscillation button (9), the oscillation will be stop.

## **CLEANING AND MAINTENANCE**

GB

**NOTED: Before cleaning the appliance always disconnect the power plug from the receptacle.**

1. DO NOT dip the device in water, or splash it with any other liquids.
2. DO NOT use solvents or any other chemical products for cleaning it. When you do not use it, after cleaning it, store the fan in a dry place.
3. When you have finished using the fan at the end of the season, wipe off any dust to maintain it in good working order for the next season; if necessary disassemble the grille and remove the fan; clean them with a soft damp cloth.
4. Remove the water tank and clean it with lukewarm water; before replace the water tank in the unit make sure it is completely dry.



## Used electric household devices



1. If you do not want to use your electrical appliance any longer, return it free of charge to a recycling depot for used electric appliances.



2. Used electric devices do not belong in the household garbage (see symbol)

## Further disposal instructions

1. Return the electrical appliance in such a condition that its later re-use or recycling is not adversely affected. Batteries must be removed in advance and the destruction of parts which contain fluids must be avoided.

2. Electrical appliances can contain harmful substances. Improper handling or damage to the appliance can lead to health problems or water or ground contamination, when the appliance is recycled later.

## SPECIFICATION

Product: Mist Fan

Model: TSP40-MC

Power: 90W

Voltage: 230V / 50Hz

Made In China



All images serve as illustrations only and do not always show exact representations of the device.

All rights reserved.

## UK

If you have any questions, please contact our customer care center.

Our contact details are below:



0044-800-240-4004



enquiries@mhstar.co.uk

IMPORTER ADDRESS:

MH STAR UK LTD  
Unit 27, Perivale Park,  
Horsenden lane South  
Perivale, UB6 7RH  
MADE IN CHINA

## DE

Wenn Sie Fragen haben, wenden Sie sich bitte an unser Kundendienstzentrum.

Unsere Kontaktdaten stehen unten:



0049-0(40)-88307530



service@aosom.de

ADRESSE DES IMPORTEUR:

MH Handel GmbH  
Wendenstraße 309  
D-20537 Hamburg  
Germany  
IN CHINA HERGESTELLT

## ES

Si tiene alguna pregunta, comuníquese con nuestro Centro de Atención al Cliente. Nuestros datos de contacto son los siguientes:



0034-931294512



atencioncliente@aosom.es

IMPORTADOR:

SPANISH AOSOM, S.L.  
C/ ROC GROS, N° 15. 08550, ELS HOSTALETS DE  
BALENYÀ, SPAIN.  
B6629 5775  
WWW.AOSOM.ES  
ATENCIONCLIENTE@AOSOM.ES  
TEL: 931294512  
HECHO EN CHINA

## PT

Se tiver alguma dúvida, por favor contacte o nosso Centro de Atendimento ao Cliente. Os nossos dados de contacto são os seguintes:



0034-931294512



info@aosom.pt.

IMPORTADOR:

SPANISH AOSOM, S.L  
C.ROC GROS N.15, 08550. ELS HOSTALETS DE BALENYÀ  
TEL: 931294512 (SEG-SEX DAS 7:30H ÀS 16:30H)  
INFO@AOSOM.PT  
WWW.AOSOM.PT

## FR

Si vous avez la moindre question, veuillez contacter notre centre d'assistance à la clientèle.

Nos coordonnées sont les suivantes:



0033-1-84166106



aosom@mhfrance.fr

Importé par:

MH France  
2, rue Maurice Hartmann  
92130 Issy-les-Moulineaux  
France  
Fabriqué en Chine

## IT

In caso di dubbio, si prega di contattare il nostro centro assistenza clienti. I nostri dettagli di contatto sono di seguito:



0039-0249471447



clienti@aosom.it

IMPORTATO DA:

AOSOM Italy srl  
Centro Direzionale Milanofiori  
Strada 1 Palazzo F1  
20057 Assago (MI)  
P.I.: 08567220960  
FATTO IN CINA