



IN221001982V02_UK_370-142V70

Guide Book

- 2.4G remote control
- Light control switch
- Power display
- Horn sound
- High and low speed
- Forward and backward



⚠️ WARNING: The toy is to be assembled by an adult. In unassembled state contain potentially hazardous sharp points, sharp edges and small part, so please keep out of baby's reach

⚠️ Warning: Not to be used in traffic.

If you have any questions, please contact our customer care center. Our contact details are below:

☎ 0044-800-240-4004

✉ enquiries@mhstar.co.uk

IMPORTER ADDRESS:
MH STAR UK LTD
Unit 27, Perivale Park, Horsenden lane South
Perivale, UB6 7RH
MADE IN CHINA

Parts List:(Name and Quantity)

A	B	C	D	E	F	G	H	I				
J	K	L	M	N	O	P	Q					
R	S	T	U	V	W	X						
Name	A	B	C	D	E	F	G	H	I	J		
Quantity	1	1	1	4	4	2	2	2	2	2		
	K	L	M	N	O	P	Q	R	S	T	U	V
Search light holder(L/R)	Search light	Front spring	Rear axle	Front axle	Seat	Spanner	M4*14 Screw	Nut	Remote control	Charger	Flat iron	
2	1	2	1	1	1	2	14	5	1	1	1	
	W	X										
Big washer	Small washer											
2	5											

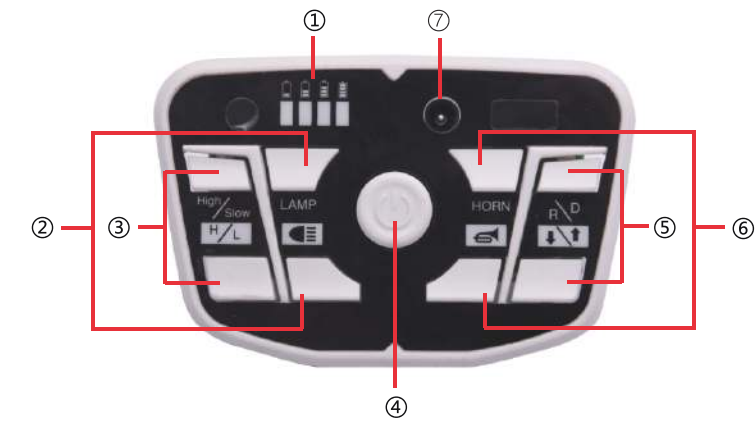


Product Specifications:

Name	Specification
Battery	12V4.5A*1
Suitable age	37-95 months
Loading capacity	30kg
Product size	100×65×72cm
Speed	3-5 km/h
Charge/Use time	charge 8-12h, use 45min
Charger	Input: 120-240V Output: 12V 500mA
Remote control	AAA1.5V

The above parameters are selected by the customer, and the specific parameters shall be subject to the actual sample.

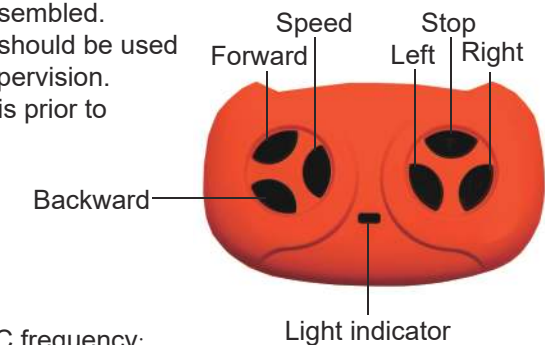
Function



Button function	
① Power display	⑤ Forward/backward
② Light control	⑥ Horn sound
③ High/low speed	⑦ Charging hole
④ Power	

Remote control function and explanation

- Do not swift forward/backward button when car is driving, or will damage the moto
- Remote control can be used normally when battery assembled.
- Remote control should be used under adults supervision.
- Remote control is prior to man control.



How to adjust R/C frequency:
Long press forward and backward button for 3 seconds, and the speed indicator flashes. Then turn on the power, the speed indicator goes to long bright, means the connection successfully. If the speed indicator no response, means the connection failed. Replace the batteries and retr

Remote control battery operation

- Take off the battery cover. Put two AAA1.5V remote control battery in with right polarity.
- New and used batteries can not be used mixed.
- Do not insert batteries into wrong polarity, or will be short-circuited.
- Non-rechargeable batteries can not be recharged. Exhausted batteries should be replaced by adults.
- The exhausted battery must be handled and operated properly by adults only. Do not be played by children.

Installation Order Diagram

1. Front axle and front spring assembly

First, put the flat iron on the front axle. Put 1pcs front spring to each side of square tube. Then insert the front axle into the hole of square tube, add 1pcs washer and use spanner to tighten the nut. The same way for the other side. Direction lever should be passed through the hole of front axle, then add 1pcs small washer and use spanner to tighten the nut.



2. Front wheel assembly

Add 1pcs big washer, 1pcs wheel, 1pcs small washer step by step, use spanner to tighten the nut. Finally put the small wheel cover on. The same way for the other side.



3. Rear spring and rear spring holder assembly

Insert the rear spring holder into the reserved place on the car body, use 8pcs M4*14 screw to tighten.



4. Rear axle and motor assembly

Insert the rear axle through the holes of rear spring holder. Add 1pcs motor, 1pcs wheel, 1pcs small washer step by step, use spanner to tighten the nut. The same way for the other side.



5. Door and rearview mirror holder assembly

Insert the door into the reserved place on the car, then insert the rearview mirror holder into the reserved place on the car and door. Use 2pcs M4*14 screw to tighten. The same way for the other side.



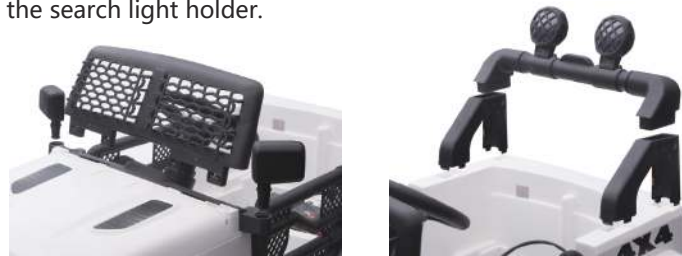
6. Steering wheel assembly

Unscrew the steering wheel, insert steering wheel into the direction lever, use screw and nut to tighten.



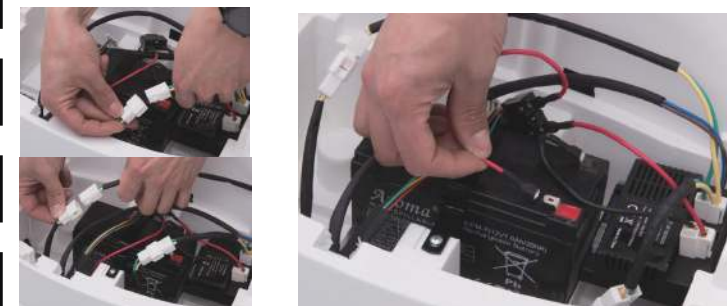
7. Windshield, rearview mirror, search light holder, search light assembly

Insert the windshield, rearview mirror, search light holder into the reserved place on the car. Then insert the search light into the search light holder.



8. Motor line and battery line connection

Connect the motor line correctly. Connect the red battery line to the red terminal.

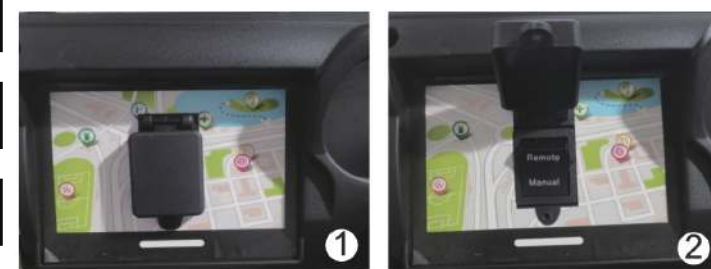


9. Seat assembly

Insert the seat into the reserved place on the car, use 2pcs M4*14 screw to tighten.



10. Switch the remote control and manual switch



1. Remove the screw from the switch cover by a screwdriver.
2. Open the switch cover, switch the remote control and manual switch. Under remote control mode, the car can only be operated by remote control, the foot can not be operated. Under manual mode, the car drive can only be operated by foot, remote control can not be operated.

Warnings

For children's safety, please read these carefully.
Assembly and adjustment must be done by adults, keep children away.
Keep children under 36 months away from small parts.
Safe belt is a must when children playing. Do not be close to fire.
Adult must teach how to play it and never leave children alone for playing.
Do not stand up or play when children are stepping on foot pedal.
Battery must be charged by adults only. Please charge it first before use.
Keep children away from plastic bag, or suffocation may occur.
Only use spare parts which provided by manufacturer.
Charger is not a toy for playing.
Maximum loading capacity is 30KG. Do not overload.
Suitable age: 37-95 months.

Safety use

Do not play in the street, road, slope or ditch.
Do not change the line or add electric device to the car.
Play the car in the dry area, not wet. Keep away from fire, or may damage the line.
One or two riders one time only. Do not overload.
Maximum capacity is 30KG.
Turn power off if no use. If long time no use, unplug battery line.
Check battery, charger and other spare parts regularly.
If any problem, please fix it before playing.

Charging notification

For the first use, please charge 8-12 hours, or will damage the battery.
Plug charger DC line into charge hole first, then plug charger into socket. Car can not be played when it charging.
Every time it charged, do not charge more than 20 hours.
It is normal that charger and battery warm (under 60°) during charging.
Do not charge if plug is wet, or will occur short-circuited.
Only use charger provided by manufacturer, or will damage charger and battery or occur short-circuited.
If long time no use, please charge 1 time per month at least.

Charging steps are as follows:

Step 1: The charging hole is on the multi-functional board.
Step 2: Put the charger plug into the plug hole.
Step 3: Connect the charger to the power socket.



Warning: Car must be charged by adults only. Car is useless during charging

Maintenance and Service

Check battery, charger and other spare parts regularly. If any problem, please fix it before playing.
• Use lubricating oil to care iron parts. Keep car away from fire and sunshine. Park it on the even place, not reversal or gradient.
• Park it indoor and cover it with waterproof cloth.
• Keep car away from fire, like stove or heater, or plastic may melt.
Keep away from flammable things, or may occur fire accident.
• Charge it after use and must be done by adults only. If long time no use, please charge it 1 time per month, in order to maintain battery.
• Clean the vehicle with a dry cloth only. Do not use chemical solvent to wipe plastic parts. Do not wash it with water or play it when raining or snowing. Water will damage motor, electric system or battery.
• Please turn power off after each use.
• Only use charger provided by manufacturer.
• Do not change car's structure or electric line. Check job request some skills or under specialist's guidance.