



Read the information supplied by the manufacturer



Wear personal protective equipment

IMPORTANT, RETAIN FOR FUTURE REFERENCE: READ CAREFULLY

**ASSEMBLY & INSTRUCTION MANUAL**

## THANK YOU FOR PURCHASING THIS PRODUCT!

Please read this instruction carefully and keep it for future use!

Please always include the instructions when handing on the product to a third party..

This product must be assembled by an adult. This product is designed for outdoor sports use. The use of the product requires specific skills and knowledge to be able to avoid injuries due to crashes and collisions.

### CONTENTS

1 X Scooter

1 X Instruction manual

1 X Tool Kts

### SAFETY CAUTIONS

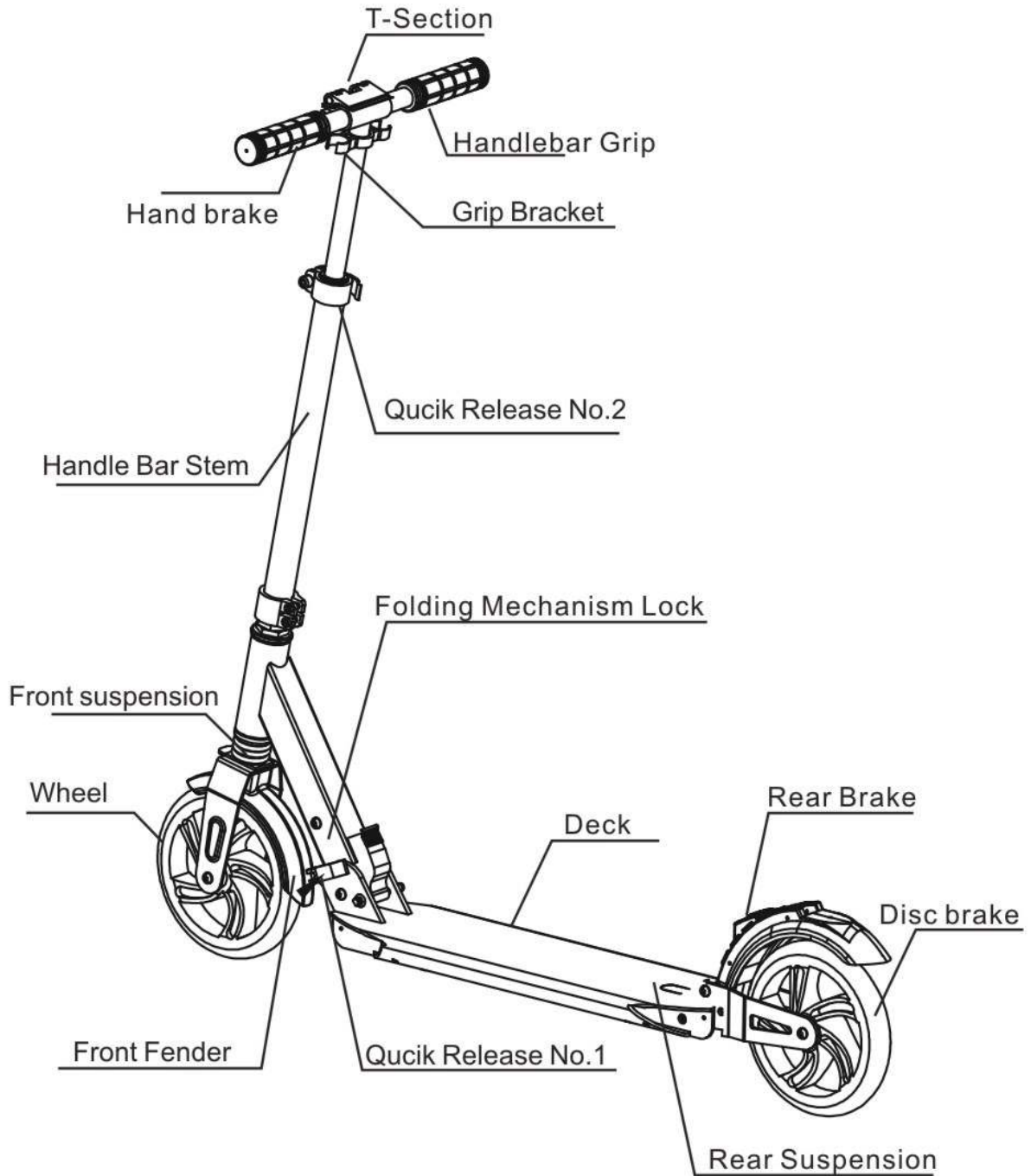
Warnings! Protective equipment should be worn always. Not to used in traffic. 100 kg max

- The scooter is only intended for use by one person and supervised by adult
- Only use it on surfaces that are suitable for it, i.e. those which are flat, clean, dry, and use the scooter where possible away from other road users. Avoid sloping ground. The brakes may become hot after the scooter has been used a while! Don't touch until cooled down.
- Always be considerate of others.
- Wear suitable protective equipment for your own safety. Never use the scooter without a helmet and hand/wrist, elbow and knee pads. Never use the scooter without shoes!
- Before begin-Ensure that all fasteners and locking parts are intact and tight, e.g. the folding mechanism and the height setting of the handlebar. The functions of self-locking screw threads can be impaired after repeated loosening and tightening of the connecting elements. Check especially for the correct alignment and fastening of the steering set-up.
- Make sure that the foot stand is folded rightly while driving.
- Do not use the scooter at twilight, at night or in poor visibility.
- Off road use only. Do not use it on roads, thoroughfares & slopes or hills. Avoid being in the proximity of stairs and open water.
- The scooter is not suitable for jumps.

EN

- The scooter is not a vehicle in the sense of the road traffic regulations! It is intended for use on footpaths.

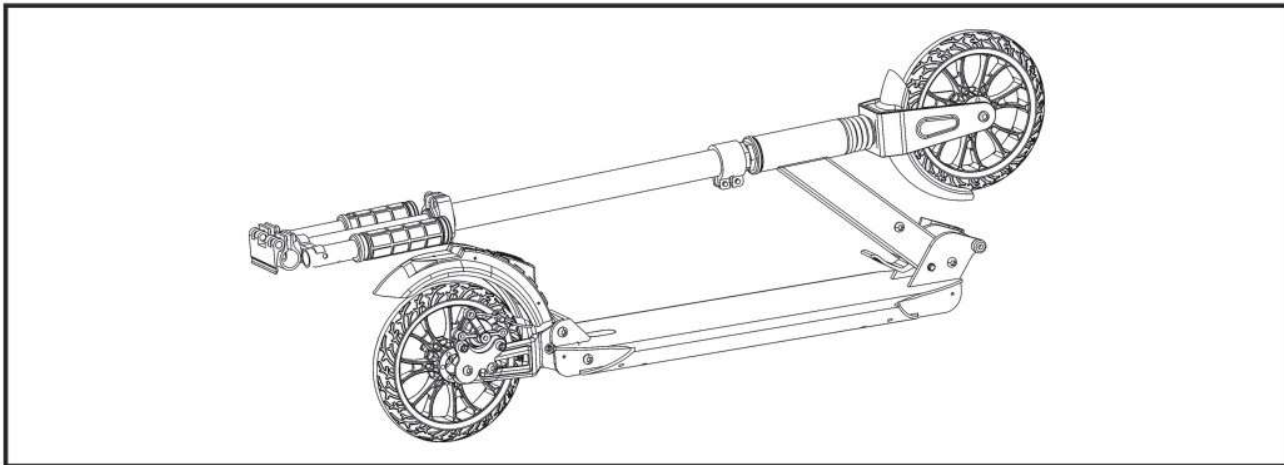
# PARTS DIAGRAM



EN

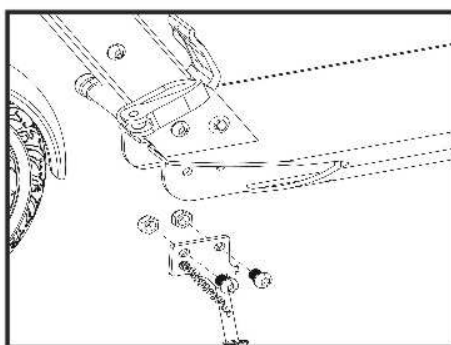
## ASSEMBLY INSTRUCTIONS

No tools are required to assemble the product. The tools attached is for maintenance use only.  
The scooter is delivered in its transport form (folded)!

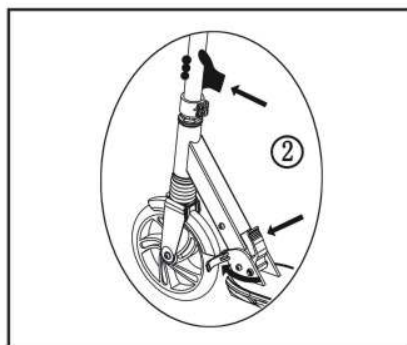


PLEASE PROCEED STEPS AS FOLLOWS TO GET THE SCOOTER READY

Step 1: Pull the level of quick release NO.1 away the deck (Picture 2)

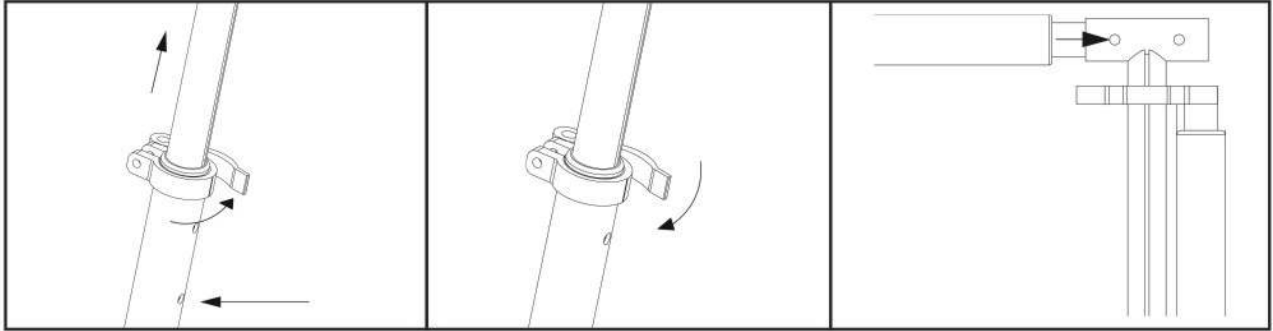


Step 2: Press the level of folding mechanism lock to loosen the transportation lock  
Push the the handlebar stem until you hear it click into place.(Picture3)

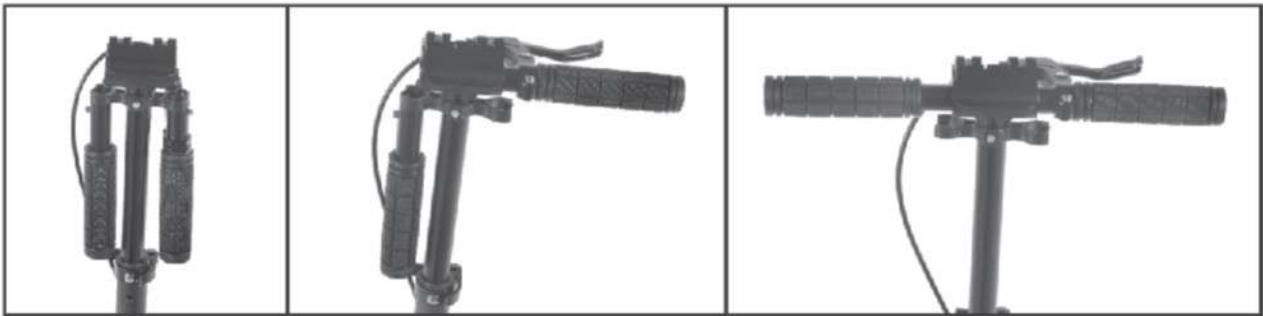


Step3: Fasten the quick release NO.1 (Picture4)

EN



Step4: Insert the handlebar grips into the T- section of the handlebar stem. Use thumbs to press down both locking buttons until the grips can be easily pushed into the Fsection Turn the handlebar grips until the locking buttons are positioned in the two openings and hear them click into place(Picture 5)



Step5: Loosen the quick release NO.2 lock on the handlebar stem by pushing the lever of the quick release lock until the lever is parallel to the handlebar grip.  
 The handlebars can be locked into place at 3 different heights. Please adjust the height to required height.  
 The maximum height ie 105.5 cm. and cannot be exceeded due to the integrated lock. If the handlebar does not sit firmly at the required height, open the quick release lock again (Picture 6)



.Always check all parts before use to ensure they are fitting tightly particularly the locking mechanism, the handlebar locking and the wheels

EN

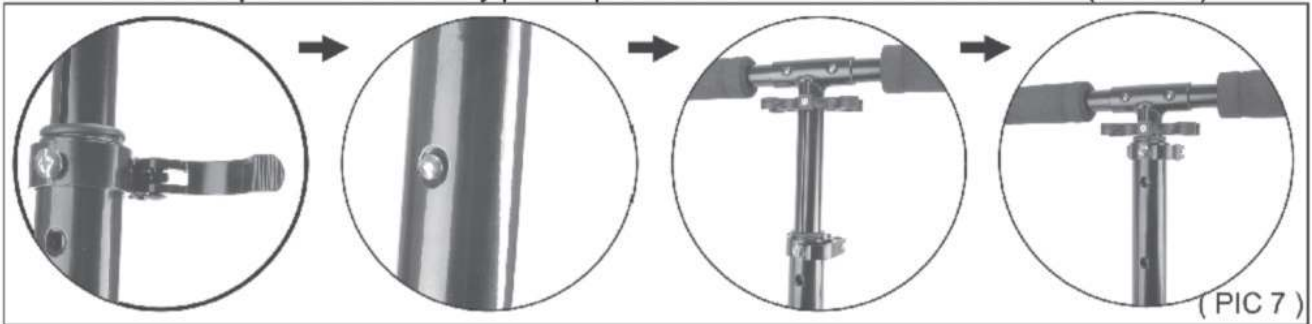
## FOLDING INSTRUCTIONS

PLEASE PROCEED STEPS AS FOLLOWS FOLD THE SCOOTER

Step 1:Loosen the quick release lock NO.2 by pushing the lever away from the handle bar stem

press the locking button so that the handlebar rod can be moved  
Push the T-Section as far as it will go into the handlebar stem.

Close the quick release lock by pushing the lever down to the handlebar stem (Picture7)



Step2: Use your thumbs to press both locking buttons in the handlebar grips and pull the handlebar grips outwards until they are released completely from the T-section.  
Hang the handle bar grips into bracket properly.(Picture8)



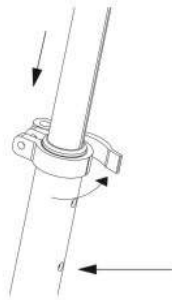
Step3: Pull the lever of quick release NO1 away the deck.

Press level of folding mechanism towards ground in order to loosen the folding lock.

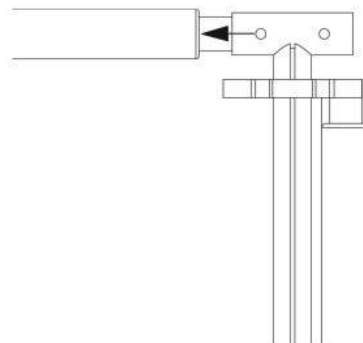
Fold up the scooter by moving the handlebar stem towards the rear wheel until you hear the transport lock click into place.

Fasten the quick release NO.1.(Picture9)

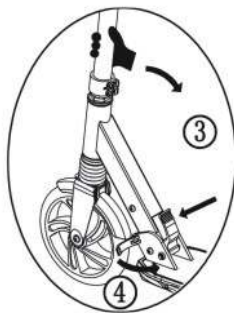
Loosen quick lock, press spring handle and push downwards to lowest lever and then tighten the quick lock.



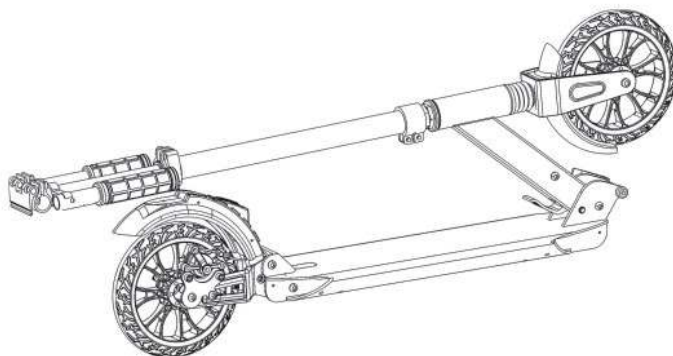
Press spring handle and pull outwards handle grips. Hold on grips on grips bracket.



Loosen the quick lock and push forwards folding button, pull downwards tube. The scooter is folded completely when you sound clicks. Return back quick lock and ensure tighten it.



The folded scooter is done. The children finish to fold scooter must have under adults supervise.



EN

#### RECOMMENDATIONS FOR USE

Before each use, make sure each component in good condition

The scooter moves when a foot is used to regularly push off, just as children's scooters.

Braking is easy to use - simply step on the friction brake over the rear wheel.

We recommend folding the scooter by hand after each use or using the stand. Aluminium is a good and light material but should also be handled carefully as it is not as hard as steel, for example.

**UK**

If you have any questions, please contact our customer care center.

Our contact details are below:



0044-800-240-4004



enquiries@mhstar.co.uk

**IMPORTER ADDRESS:**

MH STAR UK LTD

Unit 27, Perivale Park,  
Horsenden lane South

Perivale, UB6 7RH

MADE IN CHINA

**ES**

Si tiene alguna pregunta, comuníquese con nuestro Centro de Atención al Cliente. Nuestros datos de contacto son los siguientes:



0034-931294512



atencioncliente@aosom.es

**IMPORTADOR:**

SPANISH AOSOM, S.L.

C/ ROC GROS, N° 15. 08550, ELS HOSTALETS DE  
BALENYÀ, SPAIN.

B66295775

WWW.AOSOM.ES

ATENCIONCLIENTE@AOSOM.ES

TEL: 931294512

HECHO EN CHINA

**FR**

Si vous avez la moindre question, veuillez contacter notre centre d'assistance à la clientèle.

Nos coordonnées sont les suivantes:



0033-1-84166106



aosom@mhfrance.fr

**Importé par:**

MH France

2, rue Maurice Hartmann

92130 Issy-les-Moulineaux

France

Fabriqué en Chine

**PT**

Se tiver alguma dúvida, por favor contacte o nosso Centro de Atendimento ao Cliente. Os nossos dados de contacto são os seguintes:



0034-931294512



info@aosom.pt.

**IMPORTADOR:**

SPANISH AOSOM, S.L

C.ROC GROS N.15, 08550. ELS HOSTALETS DE BALENYÀ

TEL: 931294512 (SEG-SEX DAS 7:30H ÀS 16:30H)

INFO@AOSOM.PT

WWW.AOSOM.PT

**DE**

Wenn Sie Fragen haben, wenden Sie sich bitte an unser Kundendienstzentrum.

Unsere Kontaktdaten stehen unten:



0049-(0)40-88307530



service@aosom.de

**ADRESSE DES IMPORTEURE:**

MH Handel GmbH

Wendenstraße 309

D-20537 Hamburg

Germany

IN CHINA HERGESTELLT

**IT**

In caso di dubbio, si prega di contattare il nostro centro assistenza clienti. I nostri dettagli di contatto sono di seguito:



0039-0249471447



clienti@aosom.it

**IMPORTATO DA:**

AOSOM Italy srl

Centro Direzionale Milanofiori

Strada 1 Palazzo F1

20057 Assago (MI)

P.I.: 08567220960

FATTO IN CINA