

EN_ IMPORTANT, RETAIN FOR FUTURE REFERENCE: READ CAREFULLY.

FR_ IMPORTANT: A LIRE ATTENTIVEMENT ET A CONSERVER POUR VOUS Y REFRERER ULTERIEUREMENT.

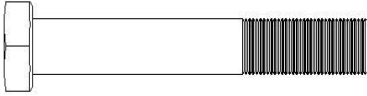
IT_IMPORTANTE, LEGGERE E CONSERVARE QUESTO MANUALE D'ISTRUZIONE PER UN USO FUTURO.

PARTS LIST

No.	Name	Qty	No.	Name	Qty
1	Main Tube	1	17	Support Cushion	2
2L/2R	Leg Extension Upright L/R	1	18	Hex Screw M10*60	2
3	Uprights	2	19	Hex Screw M10*65	4
4	Upright Support Bar	1	20	Hex Screw M10*50	3
5	Connect Tube	1	21	Hex Screw M10*16	6
6	Backrest Adjustable Rod	1	22	Nut M10	6
7	Handle Bar	2	23	Cap Nut M8	2
8	Plate bar	2	24	Flat Washer Ø10	24
9	Front Support Tube	1	25	Arch Washer Ø8	2
10	Front Adjust Tube	1	26	Carriage BoltM8*60	2
11	Front Stabilizer	1	27	Flat Washer Ø6	6
12	Rear Stabilizer	2	28	Screw M6*10	6
13	Lock U	2	29	S13-14-15 Tool	1
14	Pin	4	30	Wrench	1
15	Backrest Pad	1	31	Hex Screw M10*70	2
16	Knob M10	2			

HARDWARE & TOOL LIST

#18 Hex Screw M10*60
2PCS



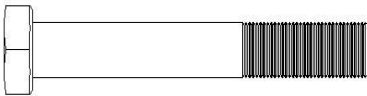
#19 Hex Screw M10*65
4PCS



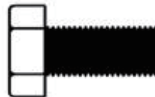
#22 Nut M10
6PCS



#20 Hex Screw M10*50
3PCS



#21 Hex Screw M10*16
6PCS



#23 Cap Nut M8
2PCS



#24 Washer Ø10
24PCS



#25 Arch Washer Ø8
2PCS



#26 Carriage Bolt M8*60
2PCS



#27 Washer Ø6
6PCS



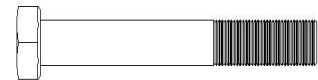
#28 Screw M6*10
6PCS



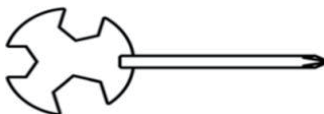
30 Wrench 13-14
1PC



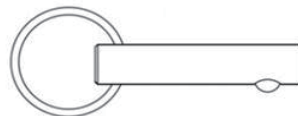
31 Hex Screw M10*70
2PCS



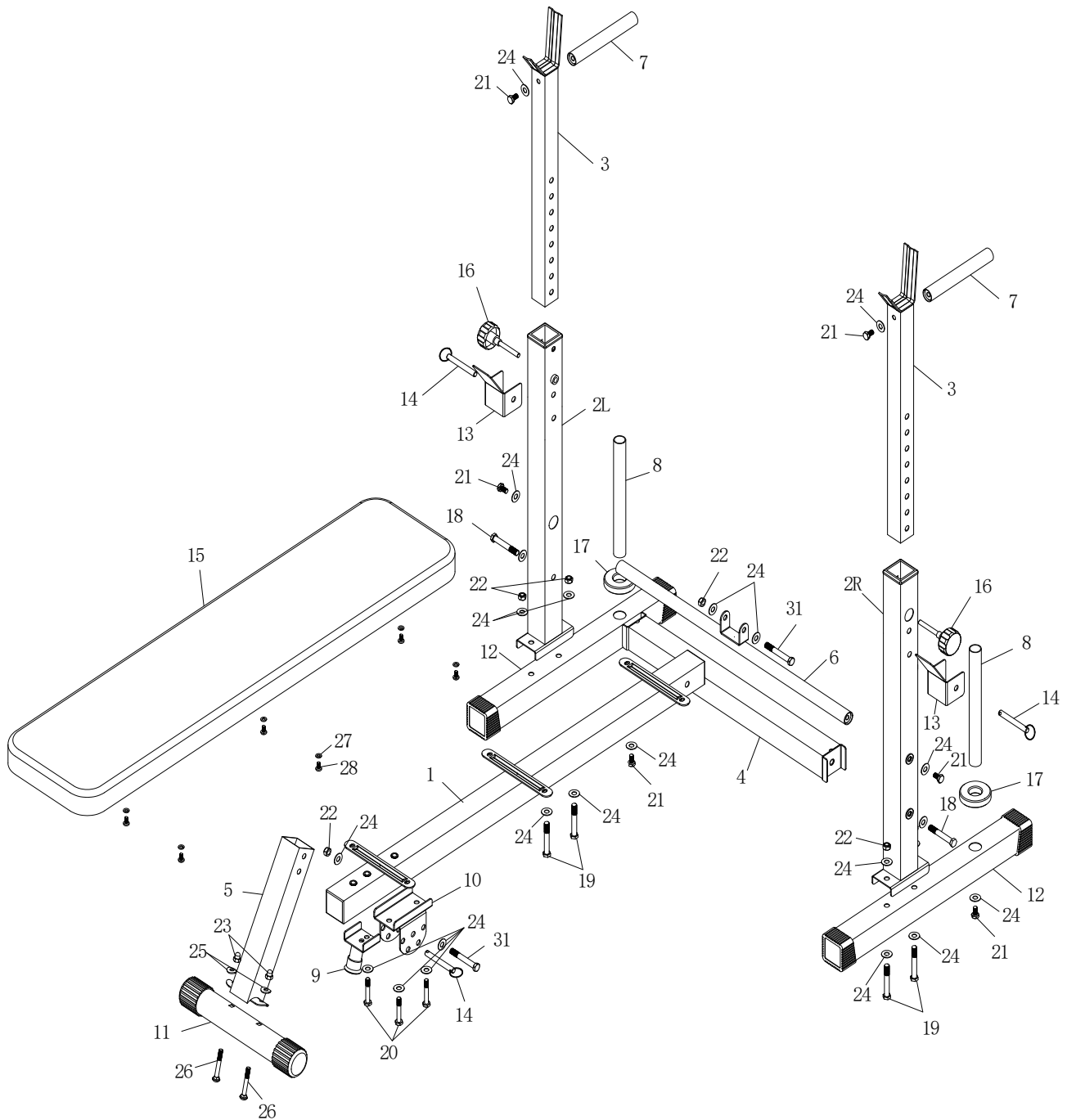
#29 S13-14-15 Tool 13-14-15
1PC



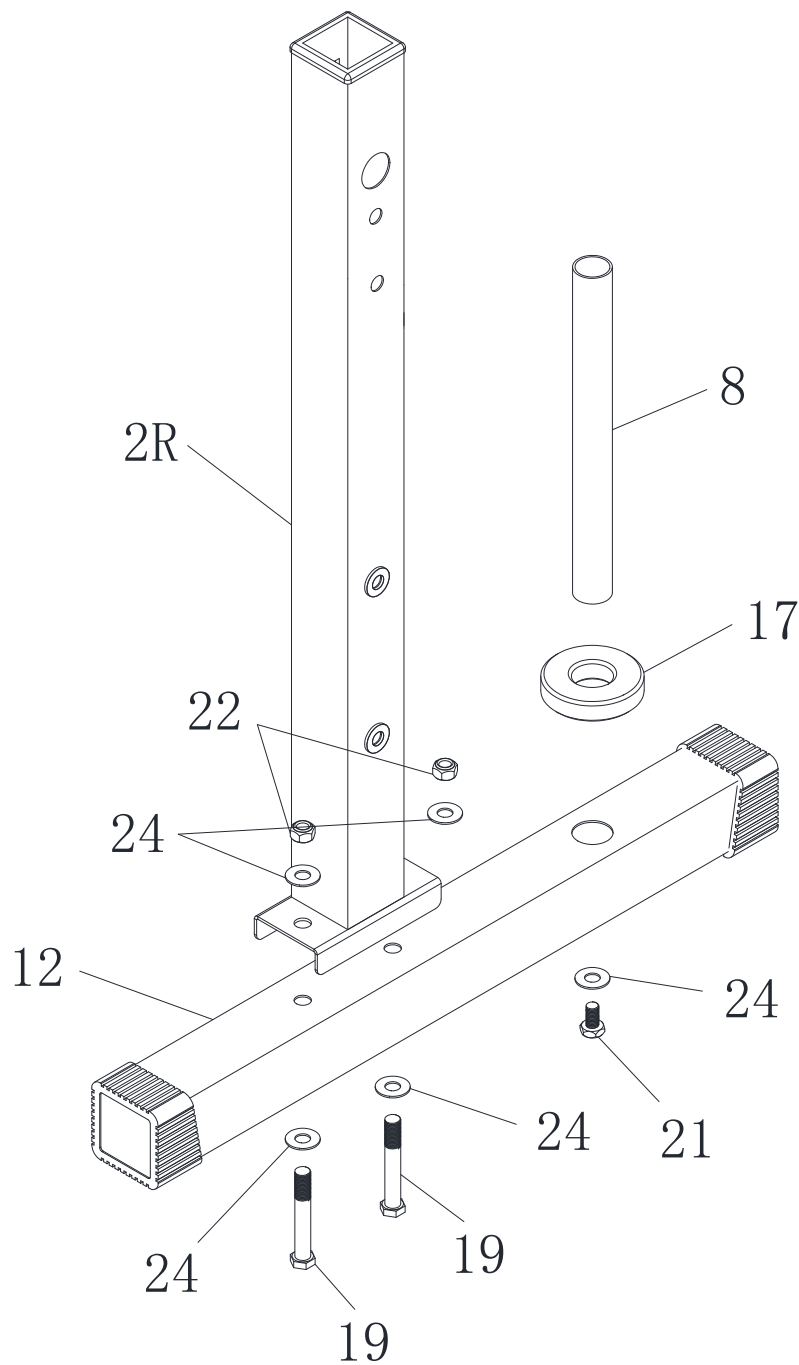
#14 Pin
4PCS



EXPLODED-VIEW ASSEMBLY DRAWING



ASSEMBLY

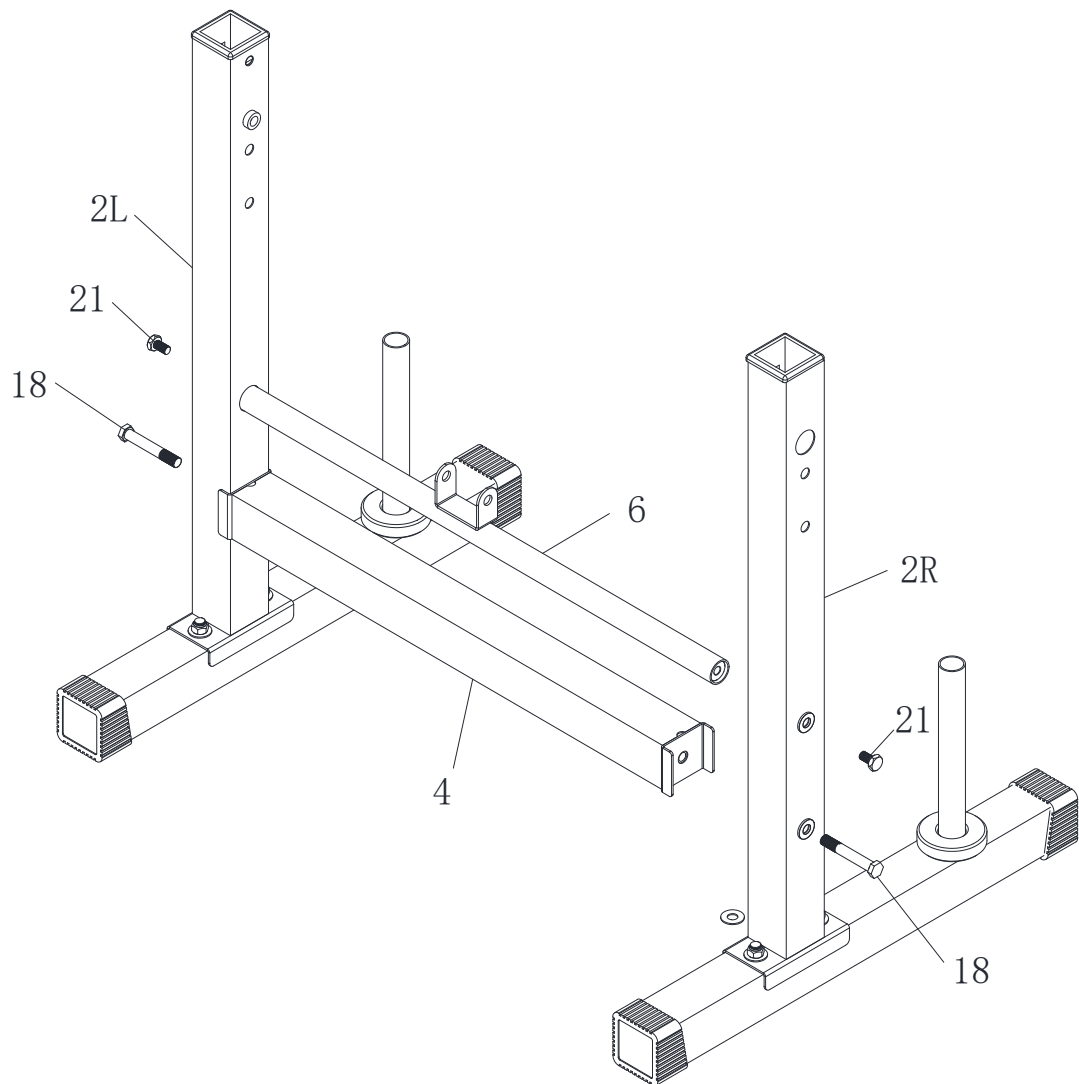


Step 1:

1, Fix Leg Extension Upright L/R (2L/2R) to Rear Stabilizer (12), and secure with four Flat Washer $\phi 10$ (24), two Nylon Nut M10 (22) and two Hex Screw M10*65 (19).

2, Fix Plate bar (8) and Support Cushion (17) to Rear Stabilizer (12) and secure with Flat Washer $\phi 10$ (24) and Hex Screw M10*16 (21).

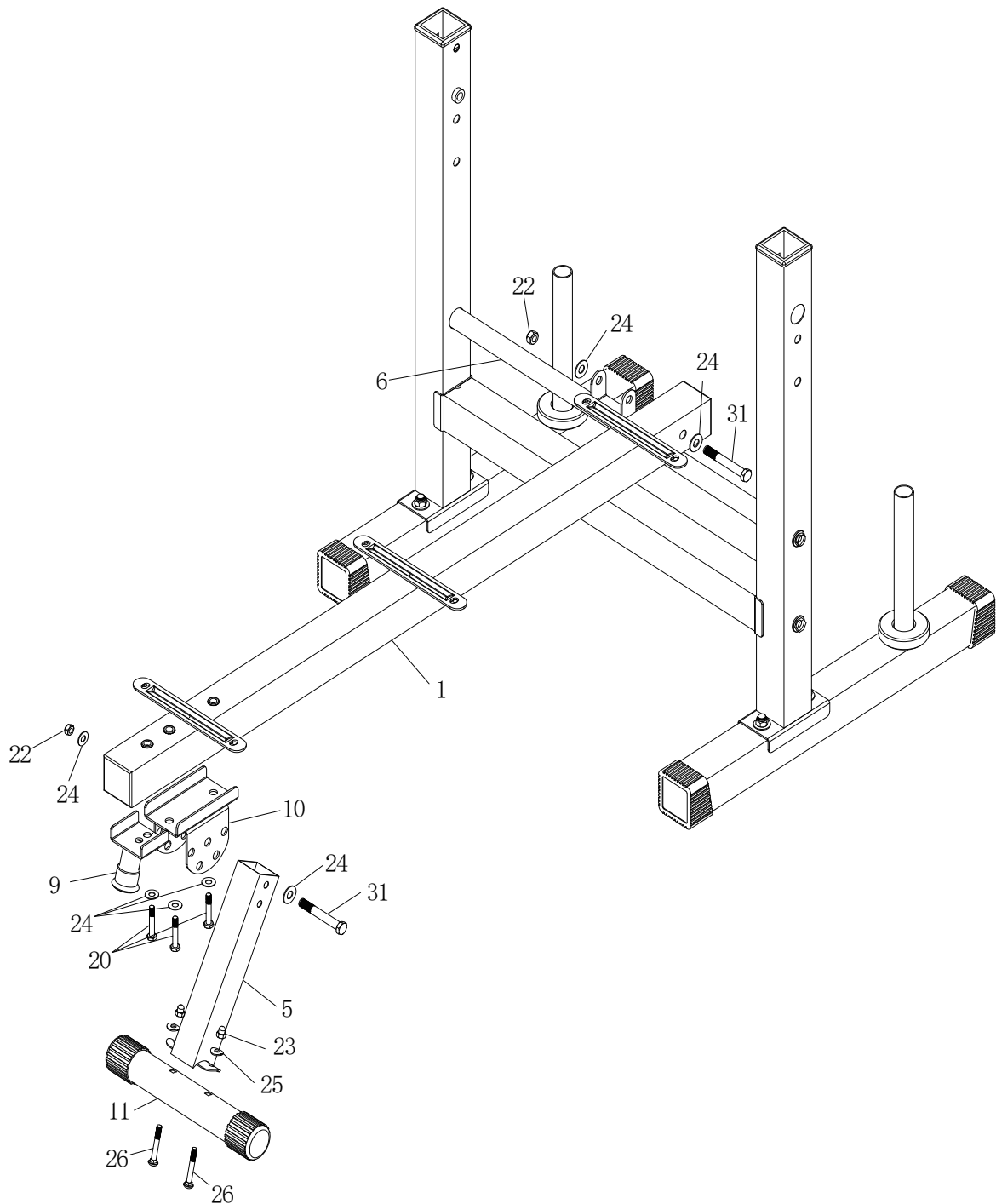
ASSEMBLY



Step 2:

1, Fix Upright Support Bar (4) and Backrest Adjustable Rod (6) to Leg Extension Upright L/R (2L/2R) and secure with two Hex Screw M10*60 (18) and two Hex Screw M10*16 (21) .

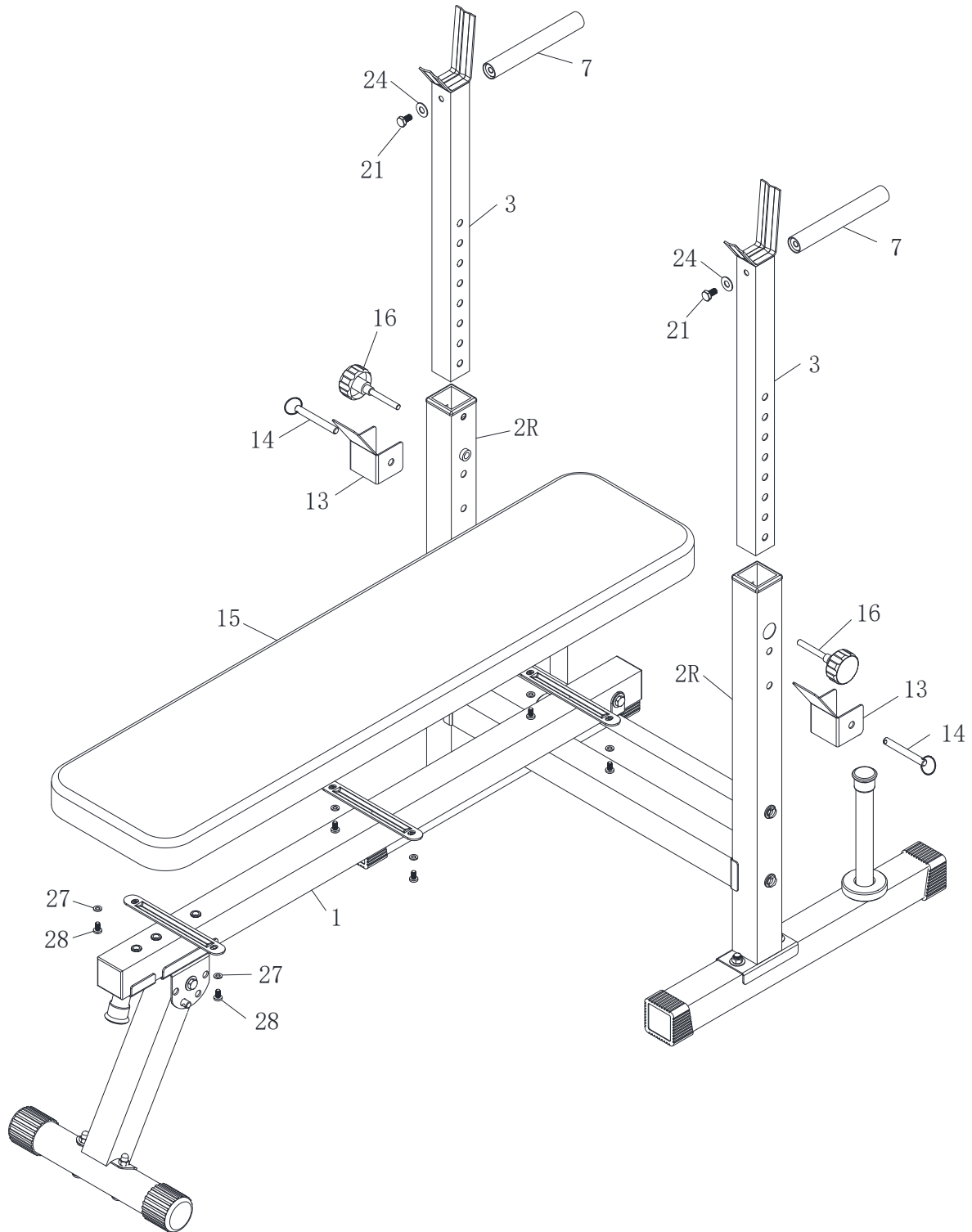
ASSEMBLY



Step 3:

- 1, Fix Front Stabilizer (11) to Connect Tube (5) and secure with two Carriage Bolt M8*60 (26), two Arch Washer $\phi 8$ (25) and two Cap Nut M8 (23).
- 2, Fix Front Support Tube (9) and Front Adjust Tube (10) to Main Tube (1) and secure with three Flat Washer $\phi 10$ (24) and three Hex Screw M10*50 (20).
- 3, Fix Connect Tube (5) to Front Adjust Tube (10) and secure with two Flat Washer $\phi 10$ (24), one Nylon Nut M10 (22) and one Hex Screw M10*65 (31).
- 4, Fix Main Tube (1) to Backrest Adjustable Rod (6) and secure with two Flat Washer $\phi 10$ (24), one Nylon Nut M10 (22) and one Hex Screw M10*70 (31).

ASSEMBLY



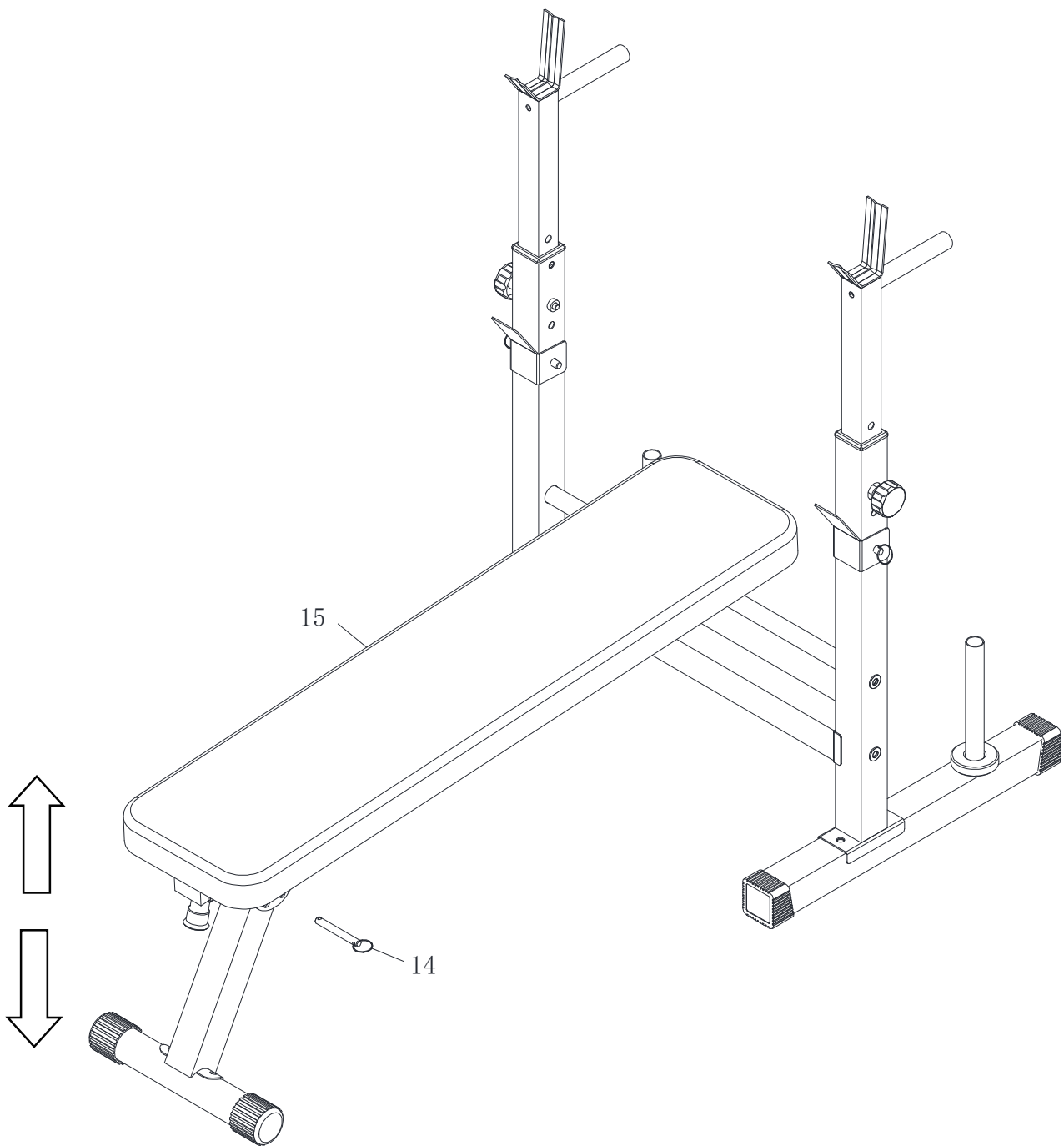
Step 4:

1, Fix Backrest Pad (15) to Main Tube (1) and secure with six Flat Washer $\text{\O}6$ (27) and six Screw M6*10 (28) .

2, Fix Handle Bar (7) to Uprights (3) and secure with two Hex Screw M10*16 (21) and two Flat Washer $\text{\O}10$ (24) .

3, Fix Uprights (3) to Leg Extension Upright L/R (2L/2R) and secure with two Knob M10 (16) , two Lock U (13) and two Pin (14) .

ASSEMBLY



Step 5:

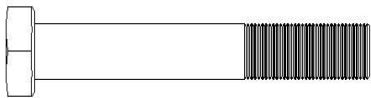
1, Change Pin (14) position to adjust the angle of Backrest Pad (15) .

LISTE DES PIÈCES

No.	Désignation	Qté	No.	Désignation	Qté
1	Tube principal	1	17	Coussin de soutien	2
2L/2R	Extension de jambe Upright G/D	1	18	Vis hexagonale M10*60	2
3	Montants	2	19	Vis hexagonale M10*65	4
4	Barre de support du montant	1	20	Vis hexagonale M10*50	3
5	Tube de connexion	1	21	Vis hexagonale M10*16	6
6	Tige de réglage du dossier	1	22	Ecrou M10	6
7	Barre de poignée	2	23	Ecrou borgne M8	2
8	Barre de plaque	2	24	Rondelle plate Ø10	24
9	Tube de support avant	1	25	Rondelle arquée Ø8	2
10	Tube de réglage avant	1	26	Boulon de carrosserie M8*60	2
11	Stabilisateur avant	1	27	Rondelle plate Ø6	6
12	Stabilisateur arrière	2	28	Vis M6*10	6
13	Verrou U	2	29	S13-14-15 Outil	1
14	Goupille	4	30	Clé à molette	1
15	Coussin de dossier	1	31	Vis hexagonale M10*70	2
16	Molette M10	2			

LISTE DE MATÉRIEL ET D'OUTILS

#18 Vis hexagonale M10*60
2PCS



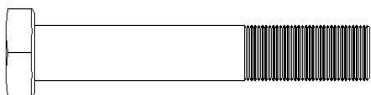
#19 Vis hexagonale M10*65
4PCS



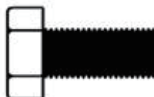
#22 Ecrou M10
6PCS



#20 Vis hexagonale M10*50
3PCS



#21 Vis hexagonale M10*16
6PCS



#23 Ecrou borgne M8
2PCS



#24 Rondelle Ø10
24PCS



#25 Rondelle arquée Ø8
2PCS



#26 Boulon de carrosserie M8*60
2PCS



#27 Rondelle Ø6
6PCS



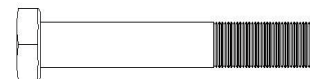
#28 Vis M6*10
6PCS



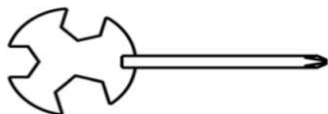
#30 Clé 13-14
1PC



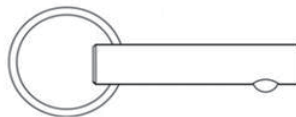
#31 Vis hexagonale M10*70
2PCS



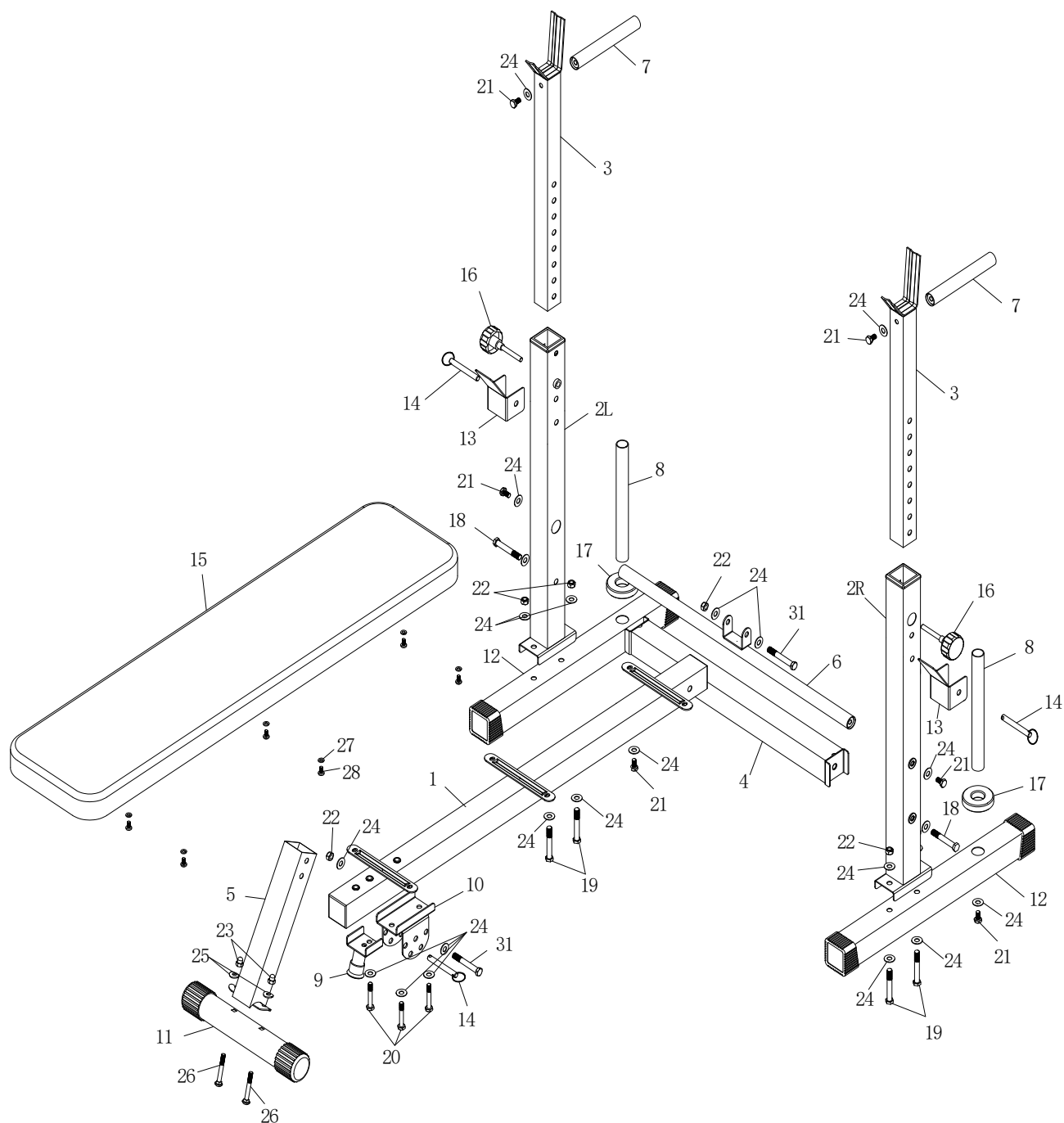
#29 Outil S13-14-15 13-14-15
1PC



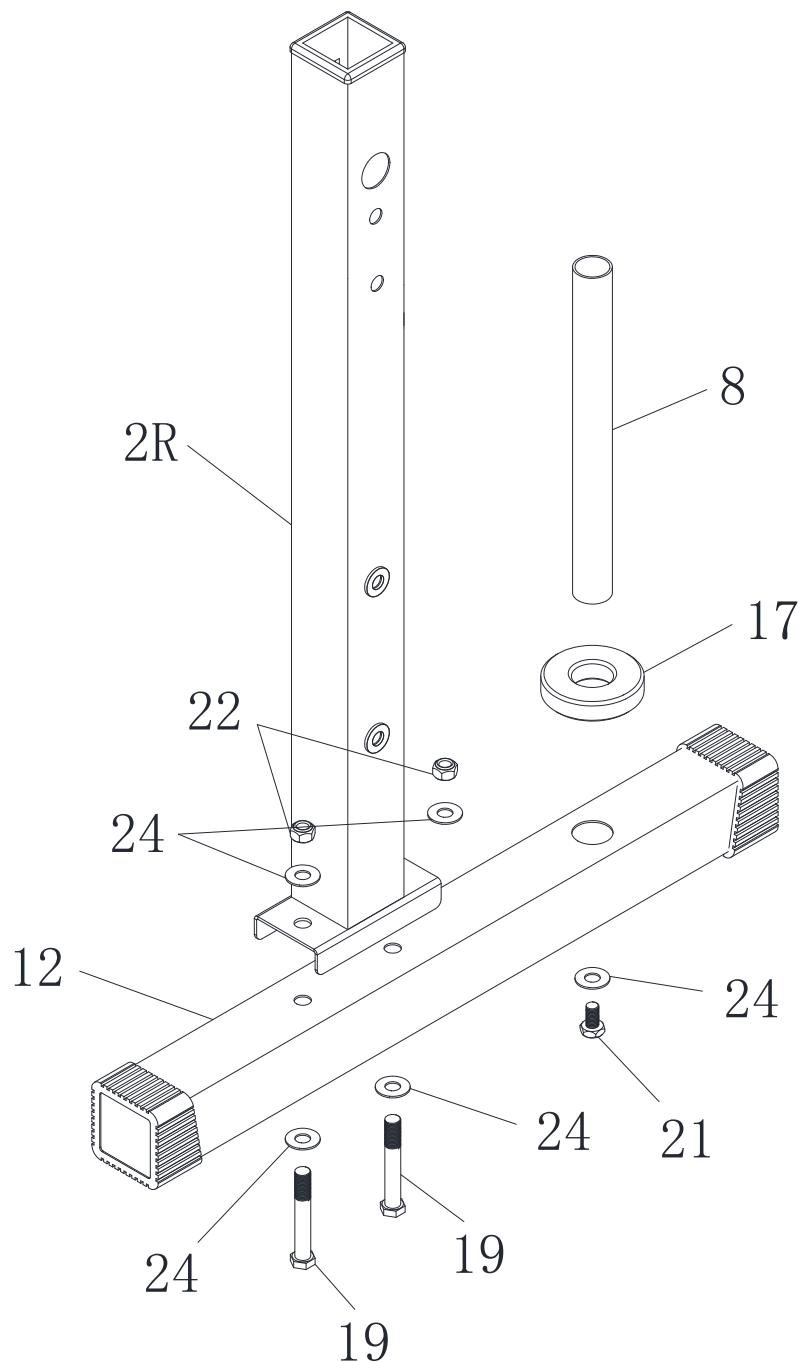
#14 Goupille
4PCS



VUE ÉCLATÉE DESSIN D'ASSEMBLAGE



ASSEMBLAGE

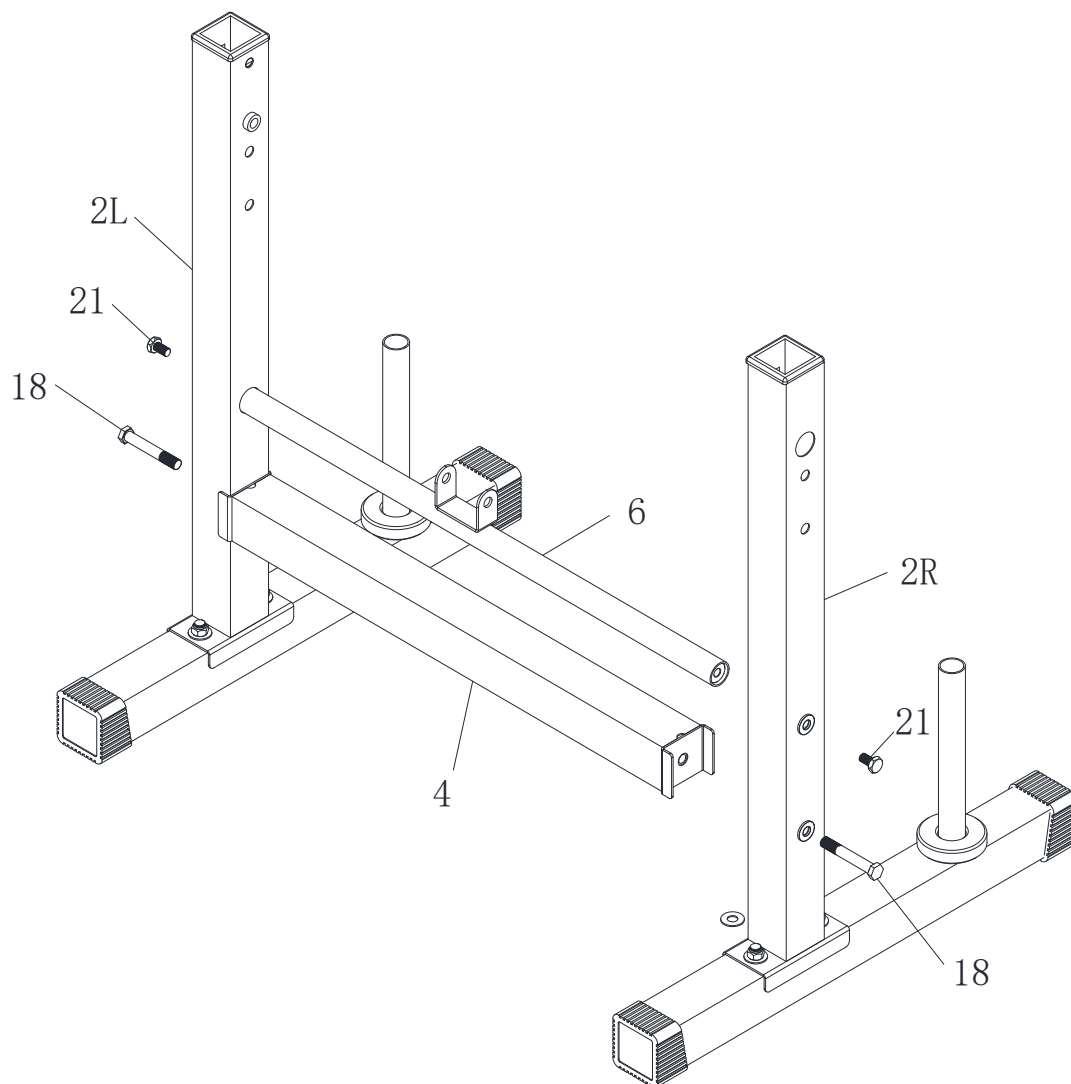


Étape 1:

1, Fixer le Montant d'extension de jambe G/D (2L/2R) au Stabilisateur arrière (12), et le verrouiller avec quatre Rondelles plates Ø10 (24), deux Écrous en nylon M10 (22) et deux Vis hexagonales M10*65 (19).

2, Fixez la Barre de plaque (8) et le Coussin de soutien (17) au Stabilisateur arrière (12) et verrouillez-les avec une Rondelle plate Ø10 (24) et une Vis hexagonale M10*16 (21).

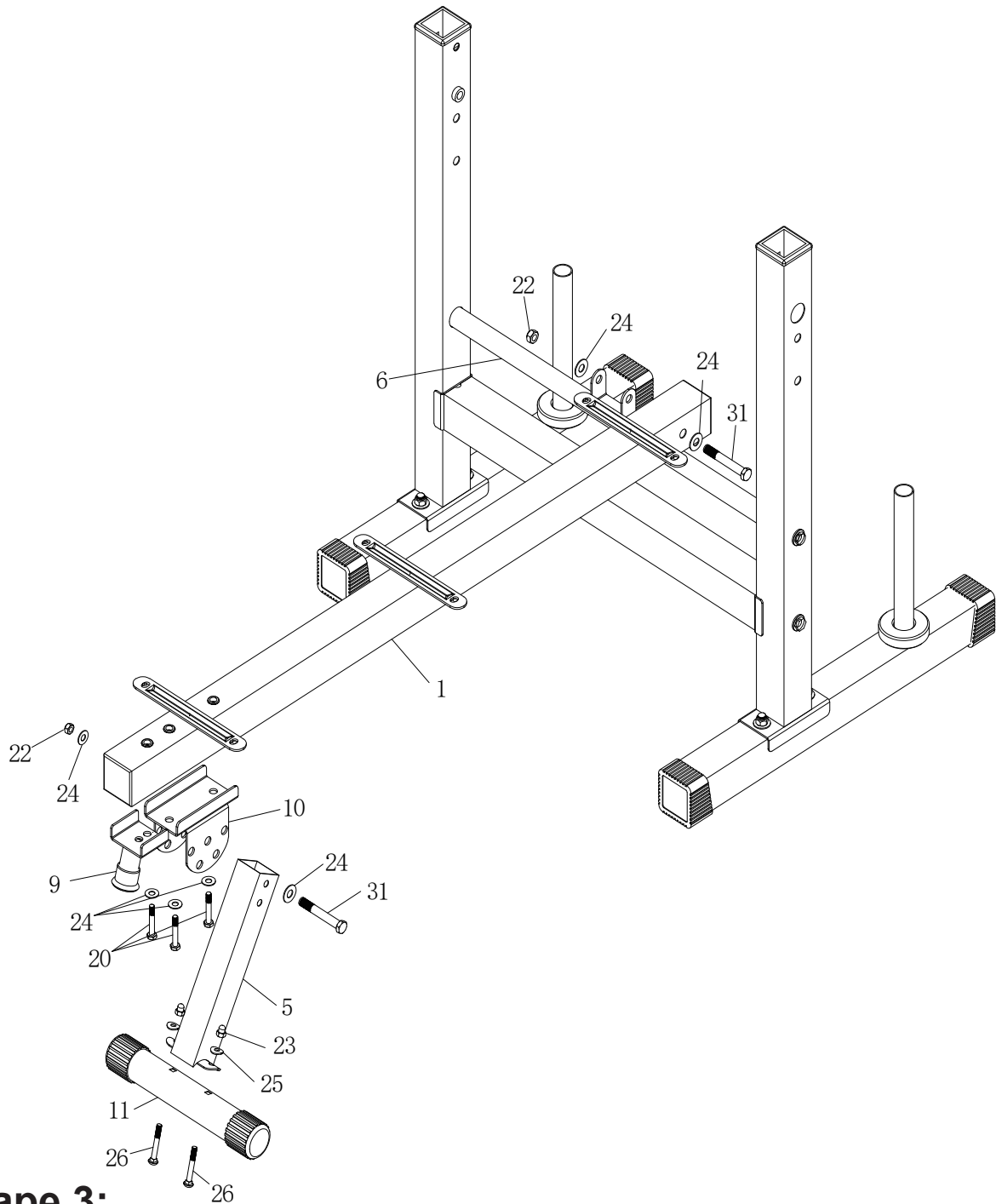
ASSEMBLAGE



Étape 2:

1, Fixez la barre de support du montant (4) et la tige de réglage du dossier (6) au montant d'extension de la jambe G/D (2G/2D) et verrouillez-les avec deux vis hexagonales M10*60 (18) et deux vis hexagonales M10*16 (21).

ASSEMBLAGE



Étape 3:

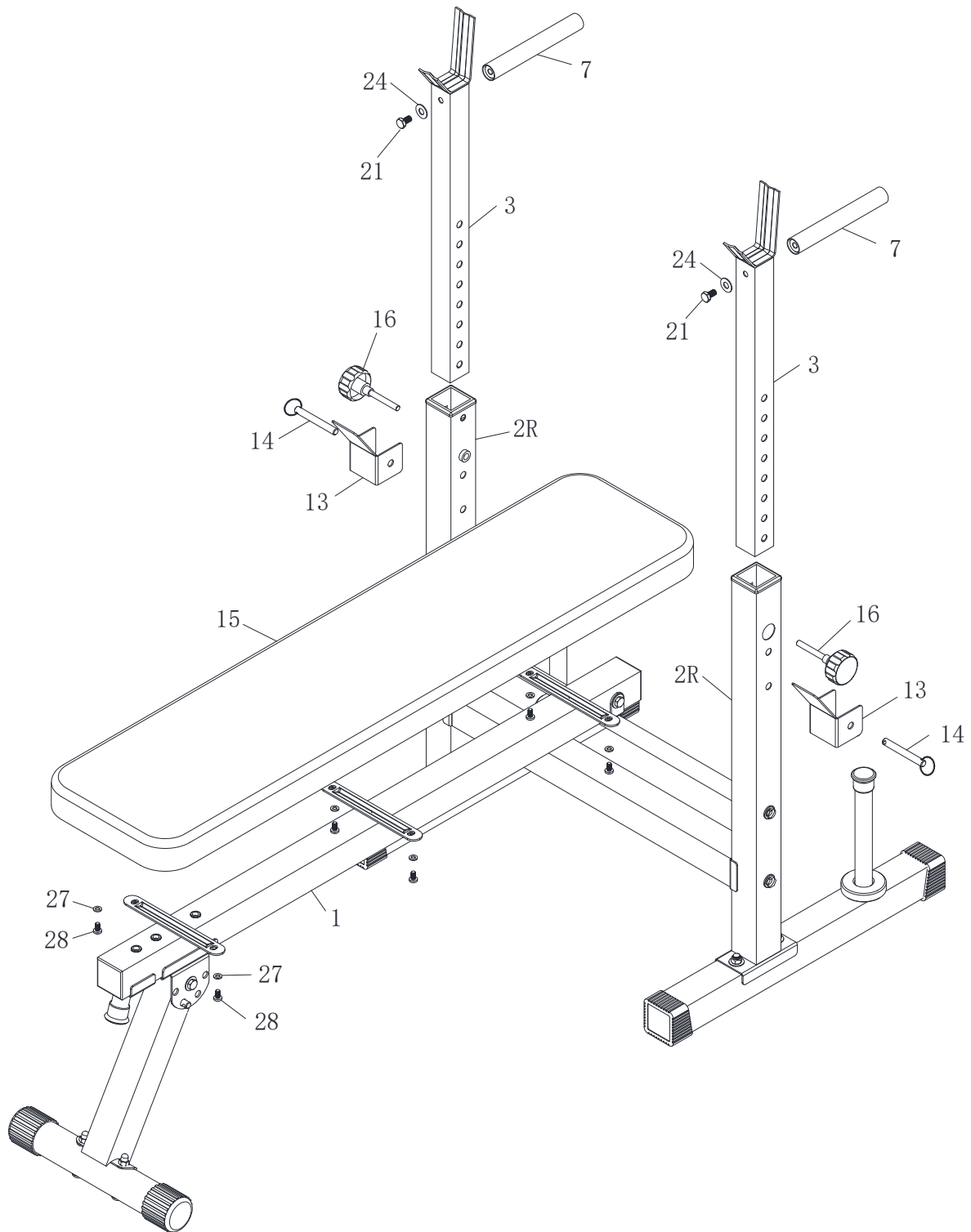
1, Fixer le Stabilisateur avant (11) au Tube de connexion (5) et le verrouiller avec deux Boulons de carrosserie M8*60 (26), deux Rondelles arquées Ø8 (25) et deux Écrous borgnes M8 (23).

2, Fixer le tube de Support avant (9) et le Tube de réglage avant (10) au Tube principal (1) et verrouiller avec trois Rondelles plates Ø10 (24) et trois Vis hexagonales M10*50 (20).

3, Fixer le Tube de connexion (5) au Tube de réglage avant (10) et verrouiller avec deux Rondelles plates Ø10 (24), un Écrou en nylon M10 (22) et une Vis hexagonale M10*65 (31).

4, Fixer le Tube principal (1) à la Tige réglable du dossier (6) et le verrouiller avec deux Rondelles plates Ø10 (24), un Écrou en nylon M10 (22) et une vis hexagonale M10*70 (31).

ASSEMBLAGE



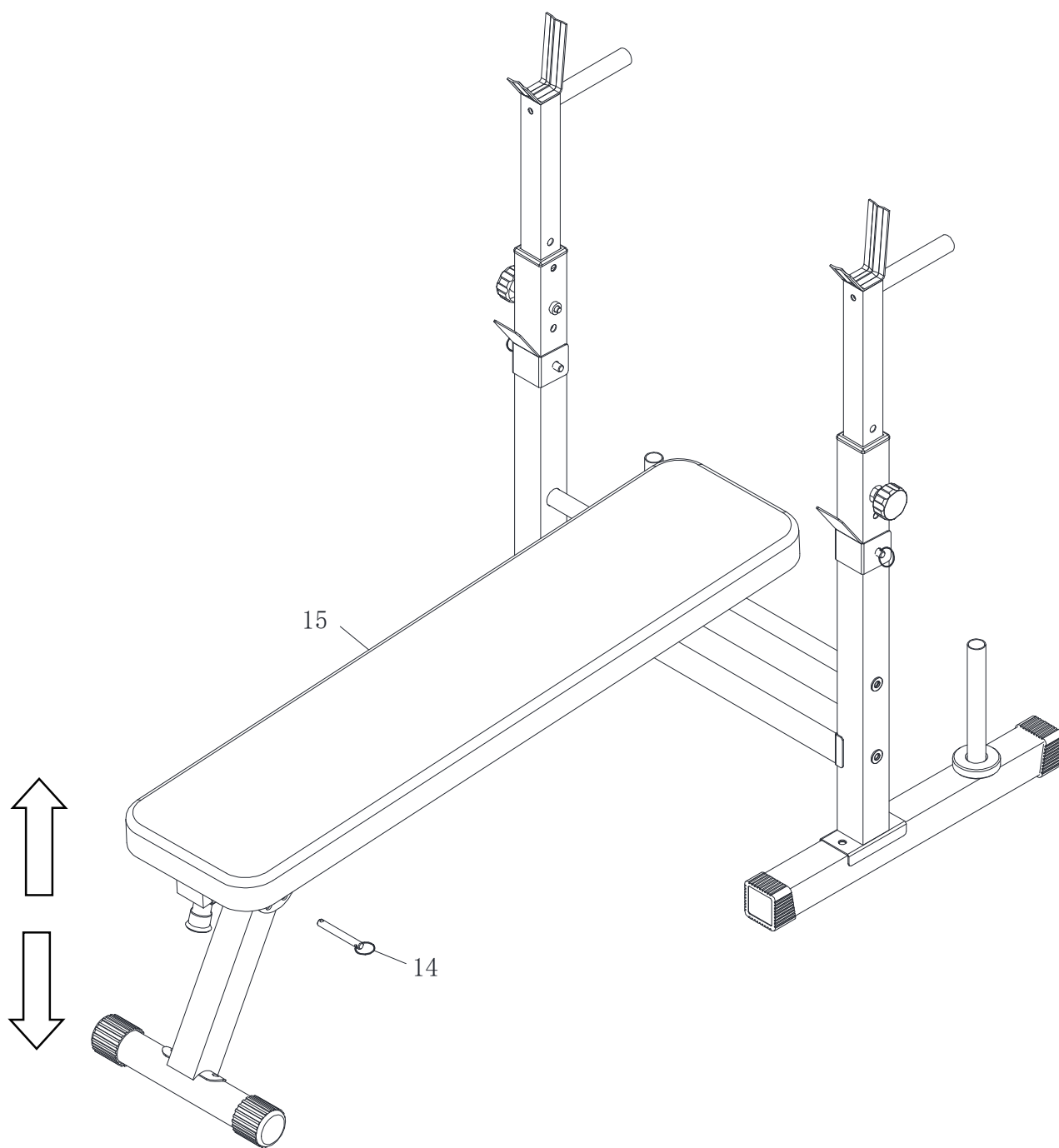
Étape 4:

1, Fixer le Coussin du dossier (15) au Tube principal (1) et le verrouiller avec six Rondelles plates Ø6 (27) et six Vis M6*10 (28).

2, Fixer la Barre de la poignée (7) aux Montants (3) et verrouiller avec deux Vis hexagonales M10*16 (21) et deux Rondelles plates Ø10 (24).

3, Fixer les Montants (3) au Montant d'extension G/D (2G/2D) et verrouiller avec deux Boutons M10 (16), deux Verrous U (13) et deux Goupilles (14).

ASSEMBLAGE



Étape 5:

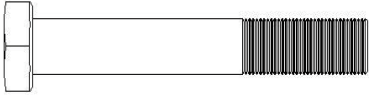
1, Changez la position de la Goupille (14) pour ajuster l'angle du Coussin du dossier (15).

LISTA PARTI

No.	Nome	Qta'	No.	Nome	Qta'
1	Tubo principale	1	17	Cuscinetto di supporto	2
2L/2R	Montante di estensione gamba verticale L/R	1	18	Vite Esagonale M10*60	2
3	Montanti	2	19	Vite Esagonale M10*65	4
4	Barra montante di supporto	1	20	Vite Esagonale M10*50	3
5	Tubo di collegamento	1	21	Vite Esagonale M10*16	6
6	Staffa di regolazione dello schienale	1	22	Dado M10	6
7	Manubrio	2	23	Dado Cieco M8	2
8	Barra della piastra pesi	2	24	Rondella Piatta Ø10	24
9	Tubo di supporto anteriore	1	25	Rondella ad Arco Ø8	2
10	Tubo di regolazione anteriore	1	26	Bullone di Supporto M8*60	2
11	Stabilizzatore anteriore	1	27	Rondella Piatta Ø6	6
12	Stabilizzatore posteriore	2	28	Vite M6*10	6
13	Lucchetto a U	2	29	Chiave S13-14-15	1
14	Perno	4	30	Chiave inglese	1
15	Cuscinetto dello schienale	1	31	Vite Esagonale M10*70	2
16	Manopola M10	2			

LISTA VITERIA & CHIAVI

#18 Vite Esagonale M10*60
2PZ



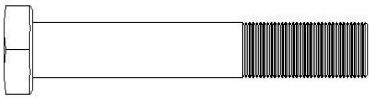
#19 Vite Esagonale M10*65
4PZ



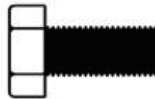
#22 Dado M10
6PZ



#20 Vite Esagonale M10*50
3PZ



#21 Vite Esagonale M10*16
6PZ



#23 Dado cieco M8
2PZ



#24 Rondella Piatta Ø10
24PZ



#25 Rondella ad arco Ø8
2PZ



#26 Bullone di supporto M8*60
2PZ



#27 Rondella Piatta Ø6
6PZ



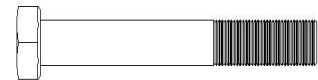
#28 Vite M6*10
6PZ



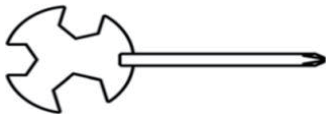
#30 Chiave inglese 13-14
1PZ



#31 Vite Esagonale M10*70
2PZ



#29 S13-14-15 Chiave 13-14-15
1PZ



#14 Perno
4PZ

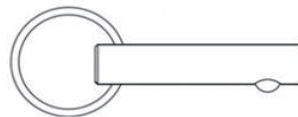
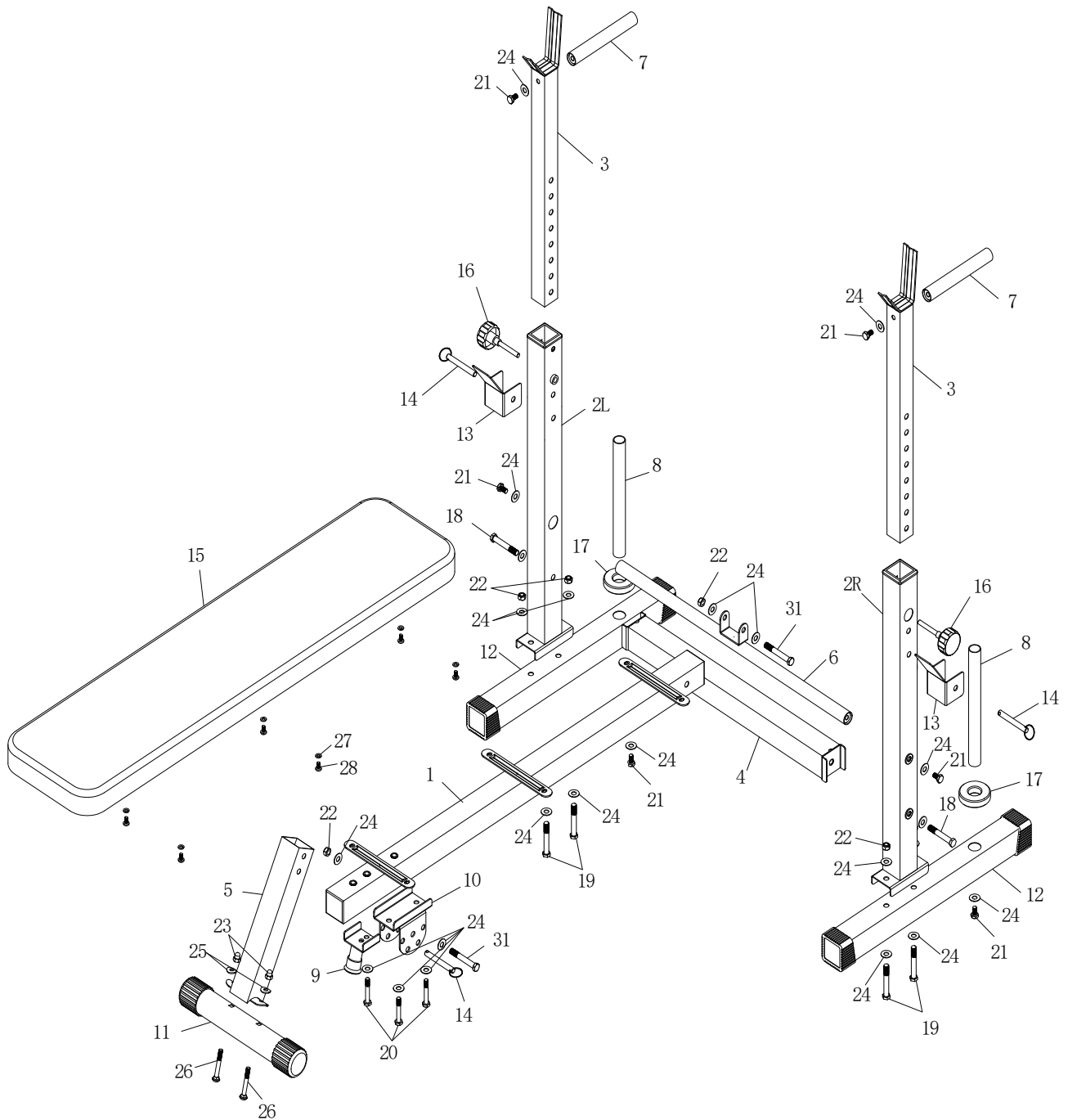
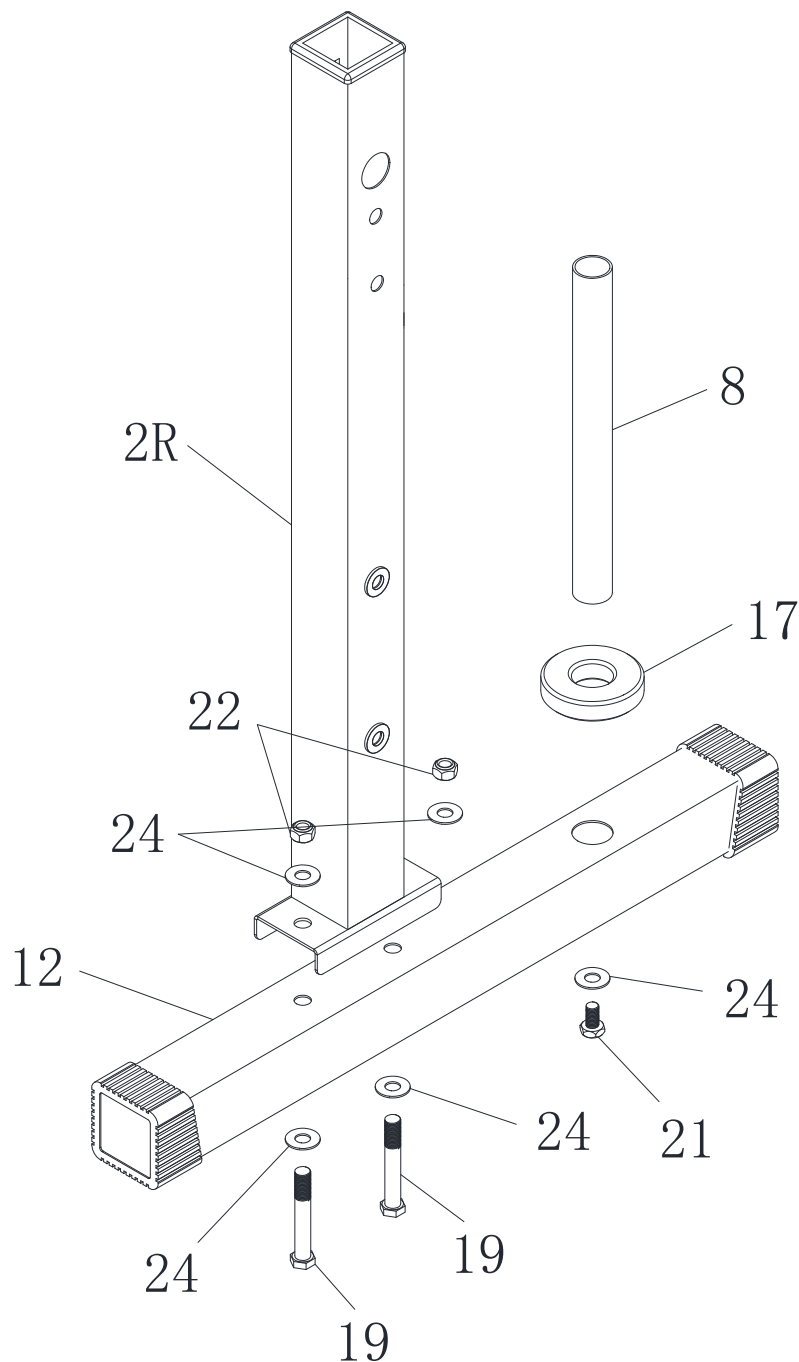


DIAGRAMMA DI ASSEMBLAGGIO ESPLOSO



ASSEMBLAGGIO

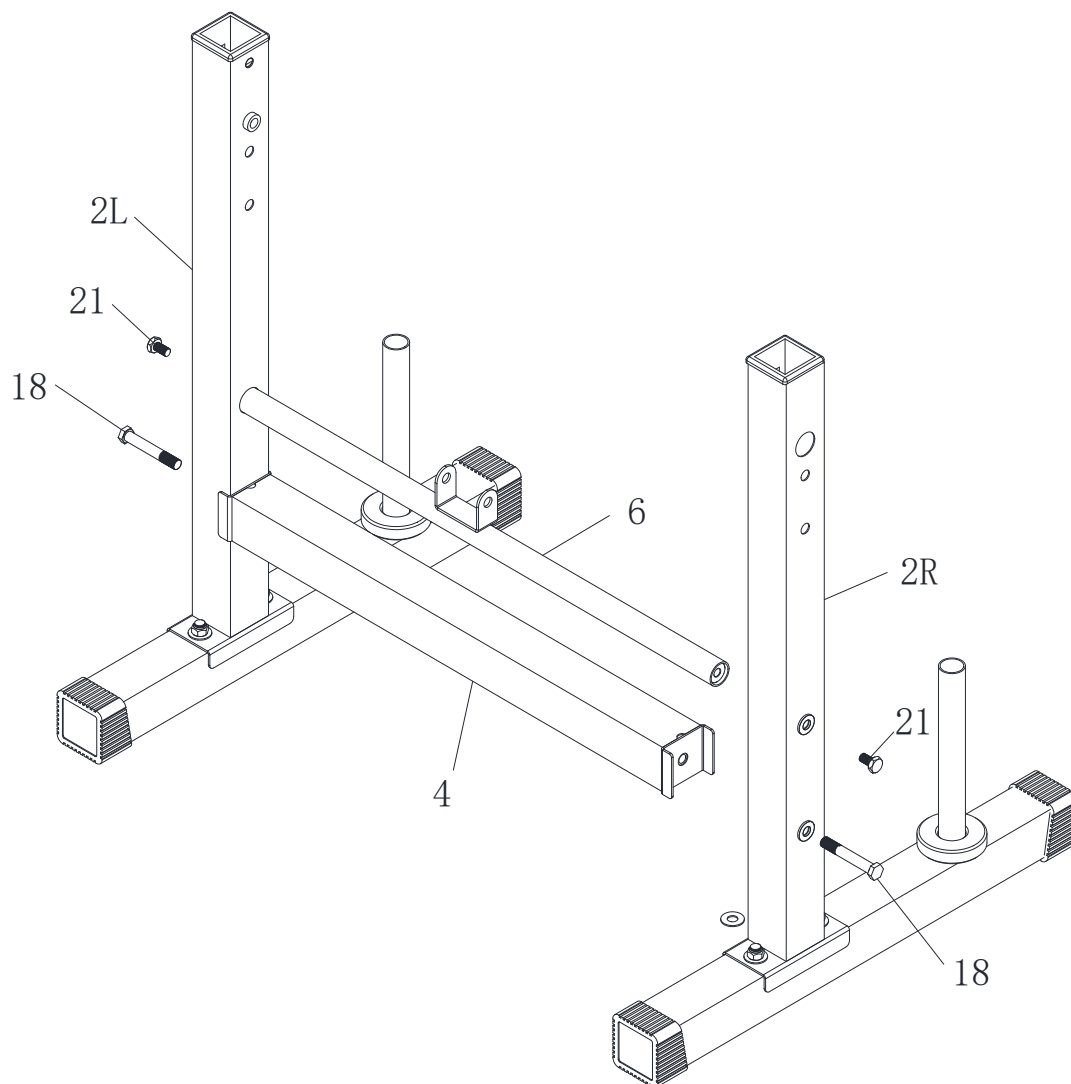


Passo 1:

1, Fissare il Montante di estensione della gamba verticale L/R (2L/2R) allo Stabilizzatore posteriore (12), fissare con quattro Rondelle piatte Ø10 (24) , due Dadi in nylon M10 (22)) e due Viti esagonali M10*65 (19) .

2, Fissare la Barra della piastra (8) e il Cuscinetto di supporto(17) allo Stabilizzatore posteriore(12), fissare con la Rondella piatta Ø10 (24) e una Vite esagonale M10*16 (21) .

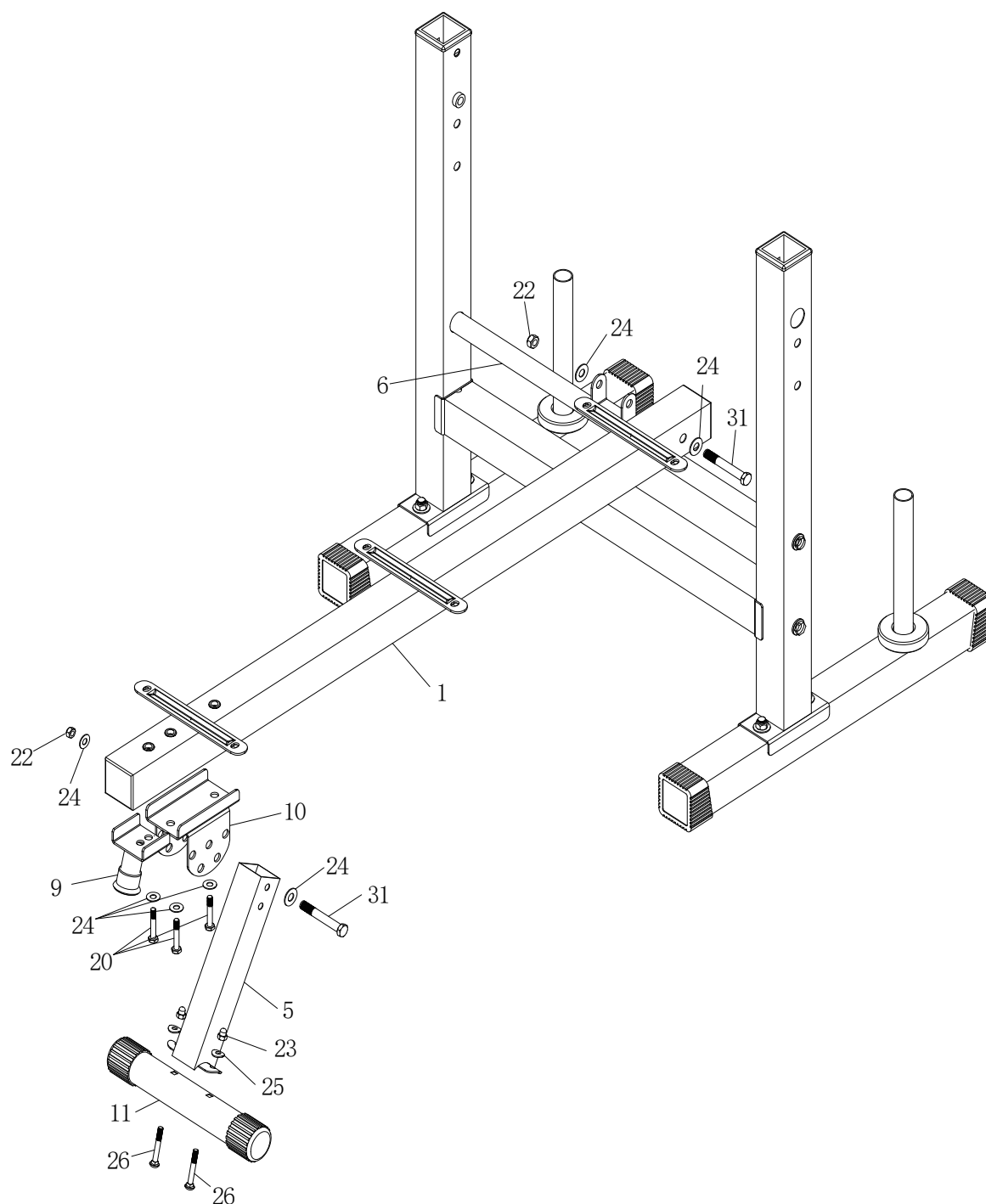
ASSEMBLAGGIOTT



Passo 2:

1, Fissare la Barra di supporto verticale (4) e la Staffa regolabile dello schienale (6) al Montante estensione della gamba L/R (2L/2R) e fissarla con due viti esagonali M10*60 (18) e due viti esagonali M10*16(21) .

ASSEMBLAGGIO



Passo 3:

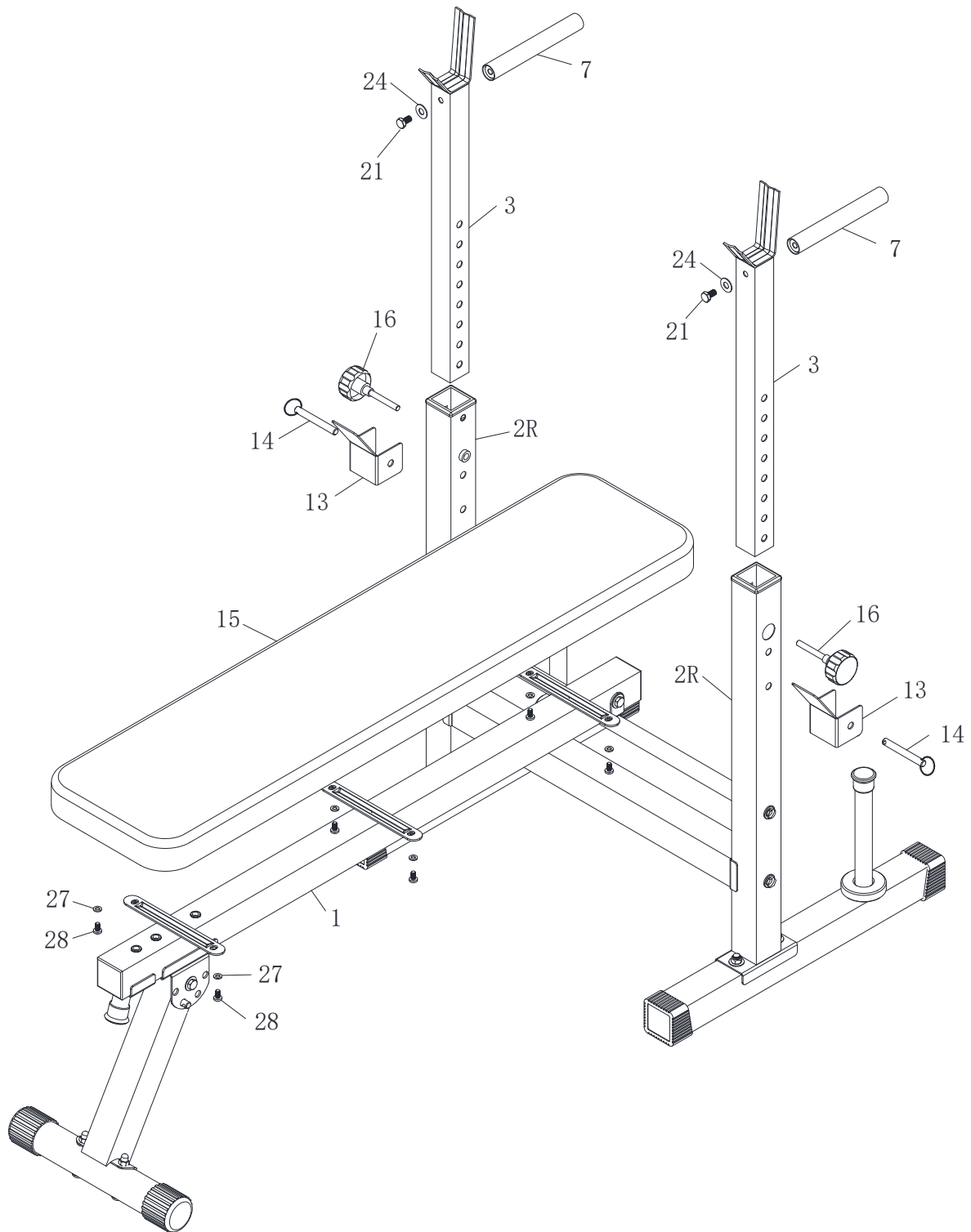
1, fissare lo Stabilizzatore anteriore (11) al Tubo di collegamento (5) con due Bulloni ciechi M8*60 (26), due Rondelle ad arco Ø8(25) e due Dadi ciechi M8 (23).

2, Fissare il Tubo di supporto anteriore (9) e il Tubo di regolazione anteriore (10) al Tubo principale (1) con tre Rondelle piatte Ø10 (24) e tre Viti esagonali M10*50 (20) .

3, Fissare il tubo di collegamento (5) al Tubo di regolazione anteriore (10) con due Rondelle piatte Ø10 (24) , un Dado in nylon M10 (22) e una Vite esagonale M10*65 (31) .

4, Fissare il Tubo principale (1) alla Staffa di regolazione dello (6) con due Rondelle piatte Ø10(24) , un Dado in nylon M10 (22) e una Vite esagonale M10*70 (31) .

ASSEMBLAGGIO



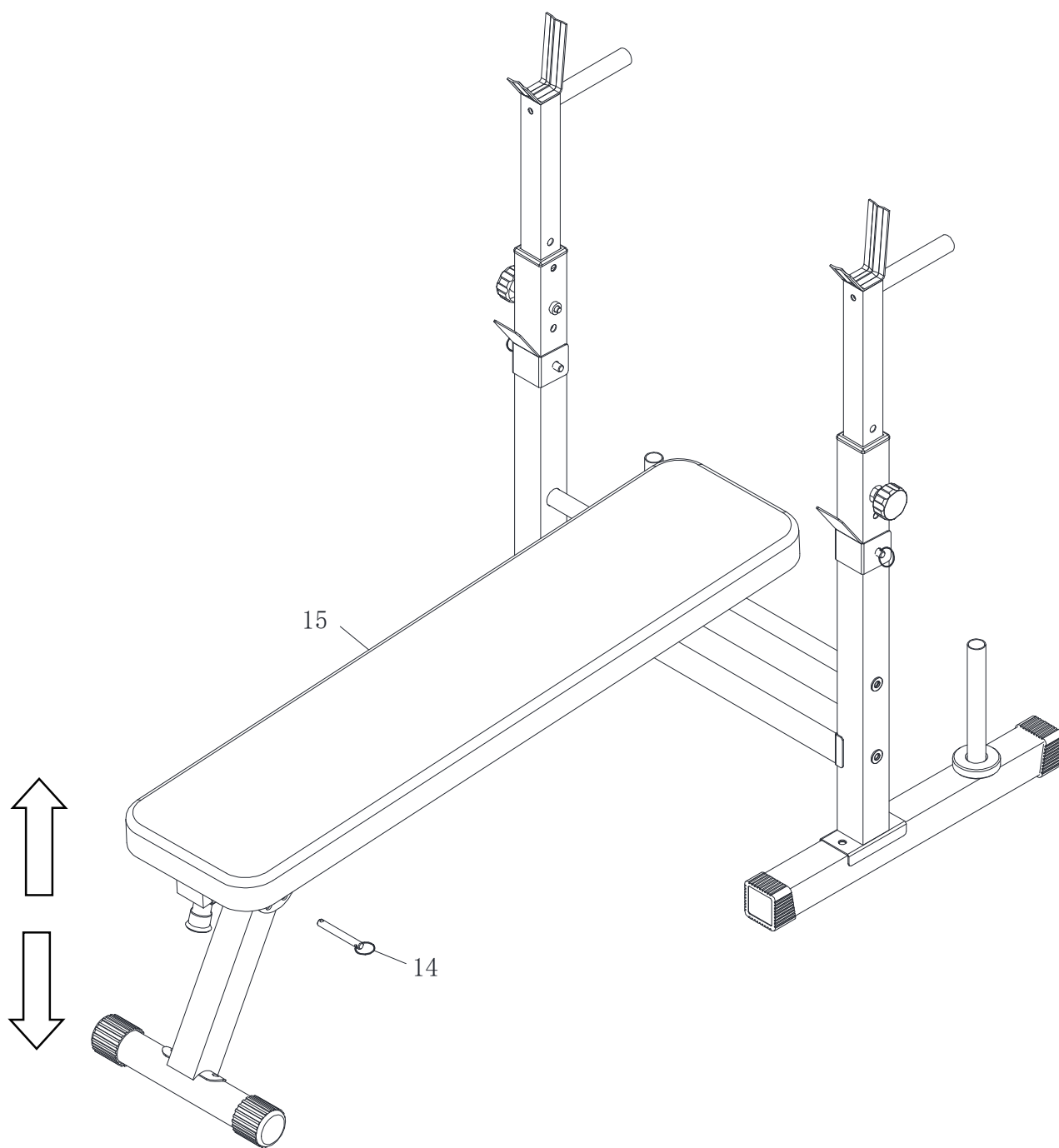
Passo 4:

1, Fissare il Cuscinetto dello schienale (15) al Tubo principale (1) con sei Rondelle piatte Ø6(27) e sei Viti M6*10 (28) .

2, Fissare la barra della maniglia (7) ai Montanti (3) con due Viti esagonali M10*16 (21)) e due Rondelle piatte Ø10 (24) .

3. Fissare i montanti (3) al Montante di estensione della gamba verticale L/R (2L/2R) con due Manopole M10 (16) , due Lucchetti a U (13) e due Perni (14) .

ASSEMBLAGGIO



Passo 5:

1, Cambiare la posizione del perno (14) per regolare l'angolazione del Cuscinetto dello schienale (15) .

UK

If you have any questions, please contact our customer care center.

Our contact details are below:



0044-800-240-4004



enquiries@mhstar.co.uk

IMPORTER ADDRESS:

MH STAR UK LTD

Unit 27, Perivale Park,

Horsenden lane South

Perivale, UB6 7RH

MADE IN CHINA

FR

Si vous avez la moindre question, veuillez contacter notre centre d'assistance à la clientèle.

Nos coordonnées sont les suivantes:



0033-1-84166106



aosom@mhfrance.fr

Importé par:

MH France

2, rue Maurice Hartmann

92130 Issy-les-Moulineaux

France

Fabriqué en Chine

IT

In caso di dubbio, si prega di contattare il nostro centro assistenza clienti.

I nostri dettagli di contatto sono di seguito:



0039-0249471447



clienti@aosom.it

IMPORTATO DA:

AOSOM Italy srl

Centro Direzionale Milanofiori

Strada 1 Palazzo F1

20057 Assago (MI)

P.I.: 08567220960

FATTO IN CINA