



IN230700541V01_UK

370-239V70



4 Wheels Dump Truck Battery Powered Ride-on



WARNING

Must be assembled by an adult.

- Suitable for 3+ Years
- Maximum user weight: **50 kg**

Read and understand this entire manual before using!

Please keep this manual for future reference as it contains important information. Before first time use, charge the battery for at least 4-6 hours, but no more than 10 hours.

IMPORTANT, RETAIN FOR FUTURE REFERENCE: READ CAREFULLY

ASSEMBLY INSTRUCTION

About your new vehicle

On the purchase of your new ride-on.

To ensure the user rides safely, please read these instructions carefully. Keep this manual for future reference.

Specification

	2WD
Battery	12V7AH X1
Charger	100-240V 50/60Hz 0.3A
input	12V 1000mA
Motor	12V #550*2(12000RPM)

- Suitable age:** 3-6 Years
- Charge time:** 8~12 hours
- Load capacity:** Under 50 kg
- Size of car:** 1190 x 680 x 650 mm
- Speed:** 3-6 km/h



BATTERY INFORMATION

- Do not recharge non-rechargeable batteries.
- Before charging rechargeable batteries, remove them from the vehicle.
- Batteries must be charged under adult supervision.
- Different types of batteries or new and used batteries must not be mixed.
- Insert batteries with the correct polarity.
- Remove dead batteries from the ride-on.
- Do not short-circuit the supply terminals.

NO.	PART NAME	Q'TY (PCS)	REMARK
		2WD	
1	Vehicle body	1	
2	gear box	2	
3	Driving wheel	2	
4	Normal wheel	2	
5	Ø12 washer	2	
6	Ø10 washer	4	
7	Lock nut	4	
8	Wheel cover	4	
9	Rear axle	1	
10	Front bumper	1	
11	Ø4x14 screw (black)	8	
12	Steering wheel	1	
13	M5x40 machine screw	1	
14	M5 nut	1	
15	Seat	1	
16	Seat back	1	
17	Rear roll bar	1	
18	Windshield	1	
19	Mirrors	2	
20	Dump gate	1	
21	Spanner	2	
22	Charger	1	
23	Remote controller	1	

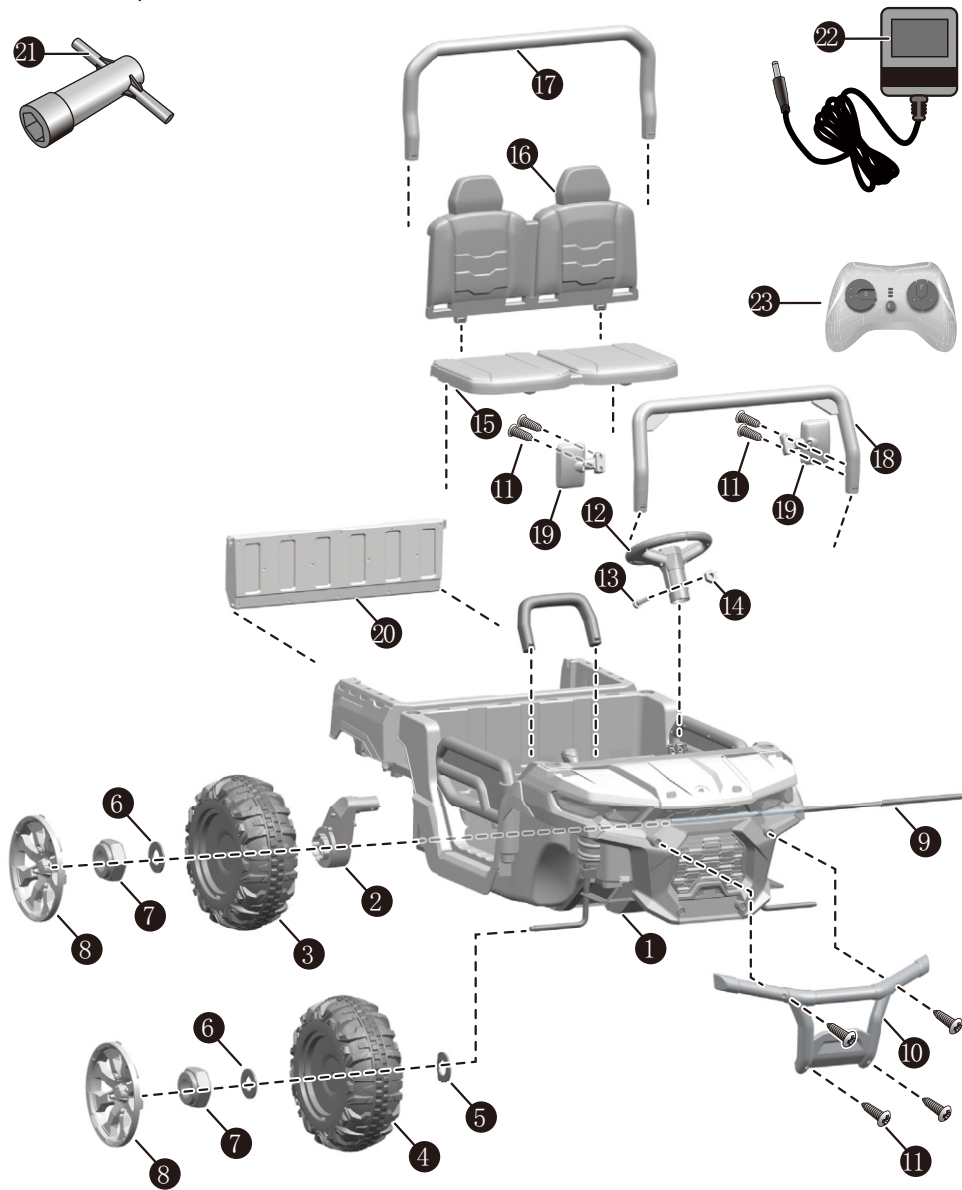
- Assembly tools required (not included):

Screwdriver



Parts Diagram

HINT: Some parts shown are assembled on both sides of vehicle



**PREVENTING POSSIBLE INJURY OR DEATH:**

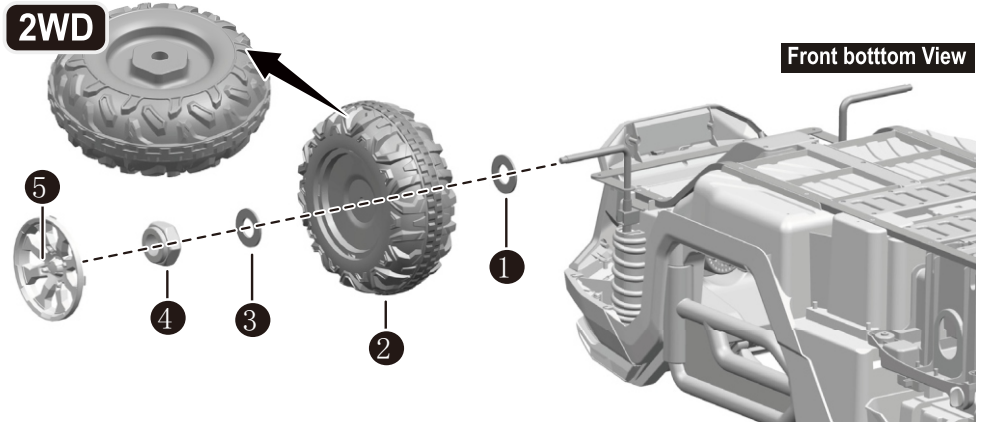
- **NEVER LEAVE CHILDREN UNATTENDED. ADULT SUPERVISION IS ALWAYS REQUIRED.** Keep children in your view when they use this vehicle.
- A certain amount of skill is required when using this vehicle, preventing falls or collisions. This ride-on must be used with caution.
- Protective equipment must be worn.
- Never use on roads, steep slopes or steps, or near swimming pools.
- Always wear shoes and sit on the seat.
- Do not use in traffic.
- Not for children under three years because of its maximum speed. Maximum load is 50 kg.
- This ride-on has no brake.

**WARNING:**

- **CHOKING HAZARD!** Not suitable for children under 36 months.
- **Must be assembled by an adult.**

Rules for Safe Riding

- Keep children in safe riding areas:
- Never use on roads, near motor vehicles, on lawns or on steep slopes and steps. Do not use near swimming pools.
- Only use on flat surfaces. Safe locations include inside your house, garden or playground.
- Never use in the dark – children could collide with obstacles. Only use this ride-on in the daytime or in a properly lit area.
- It is prohibited to change the circuit or add other electric parts.
- Regularly inspect wires and connections of the vehicle.
- When the vehicle is moving, ensure children do not touch or get near the wheels.
- This ride-on has adjustable seatbelts. Teach children how to properly fasten the seatbelt before using.

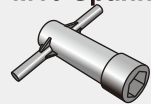


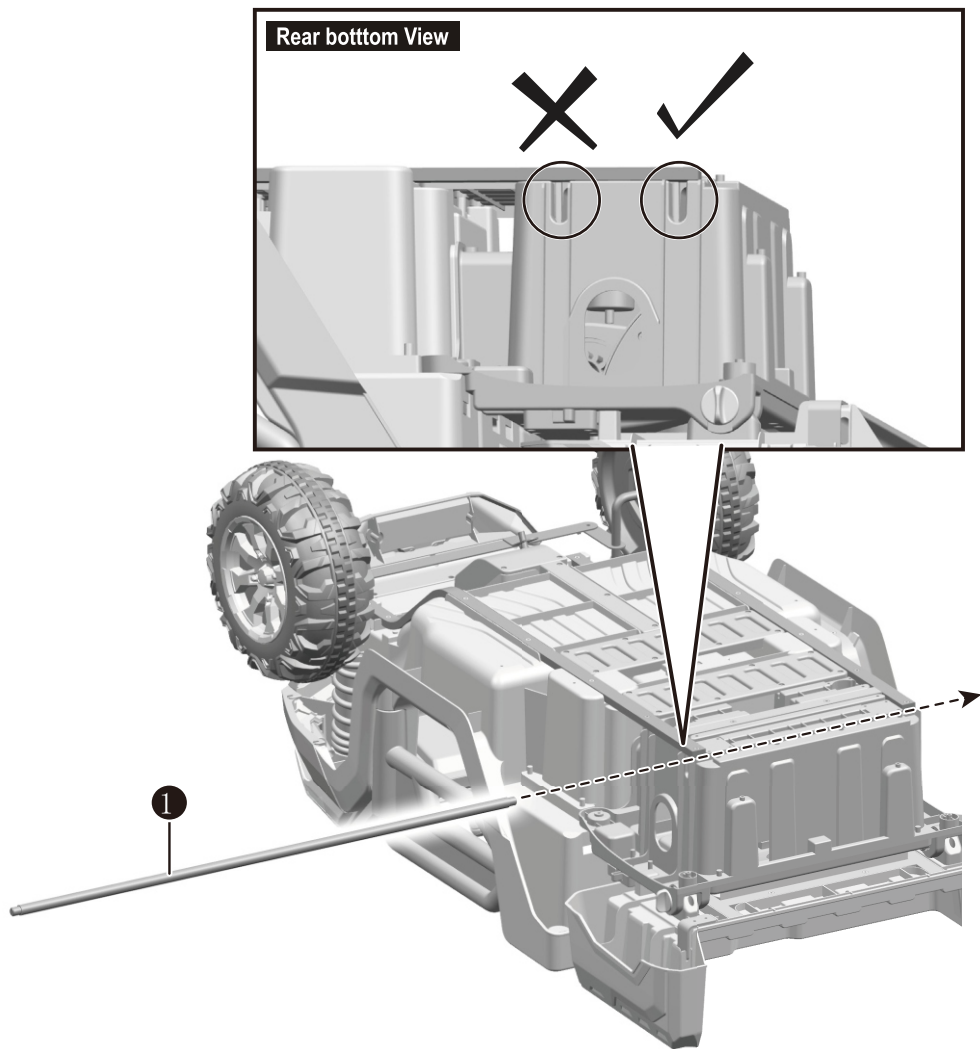
Remove all parts from the front axle.

1. Place a $\text{Ø}12$ washer onto the front axle.
2. Place the front wheel onto the front axle.
3. Place a $\text{Ø}10$ washer onto the front axle.
4. Tighten a locknut to the end of the front axle with a spanner. DO NOT over tighten.
5. 'Snap' the hubcap to the wheel.

Repeat the above procedure to assemble the other rear wheel.

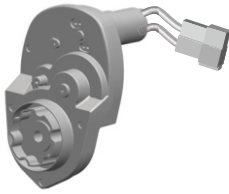
Tools required:
M10 Spanner





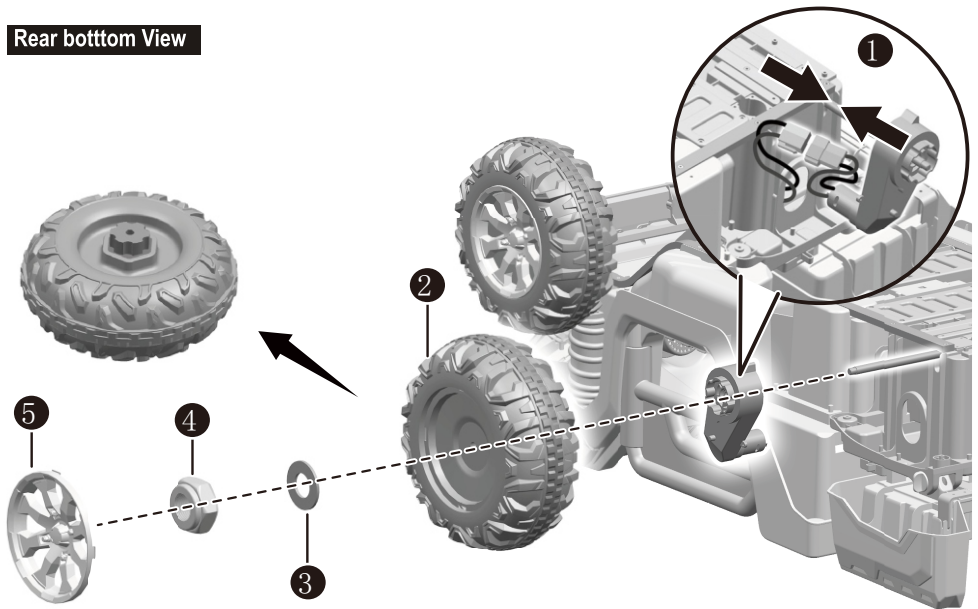
Insert the rear axle into the correct hole on the rear side of the body.

7-A

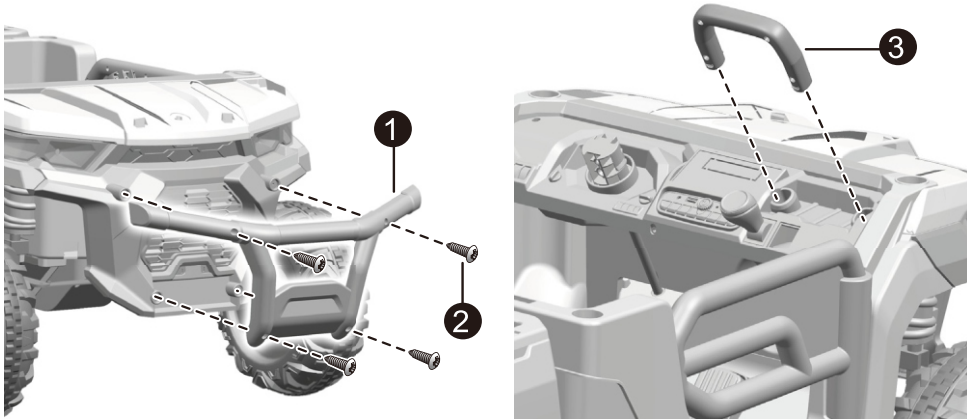


2WD 24V rear gear box

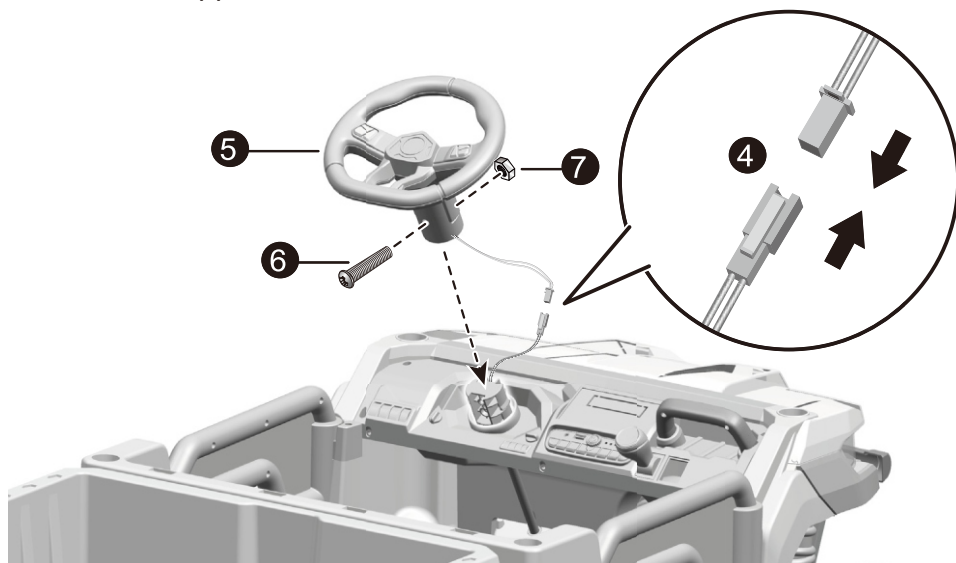
Rear bottom View

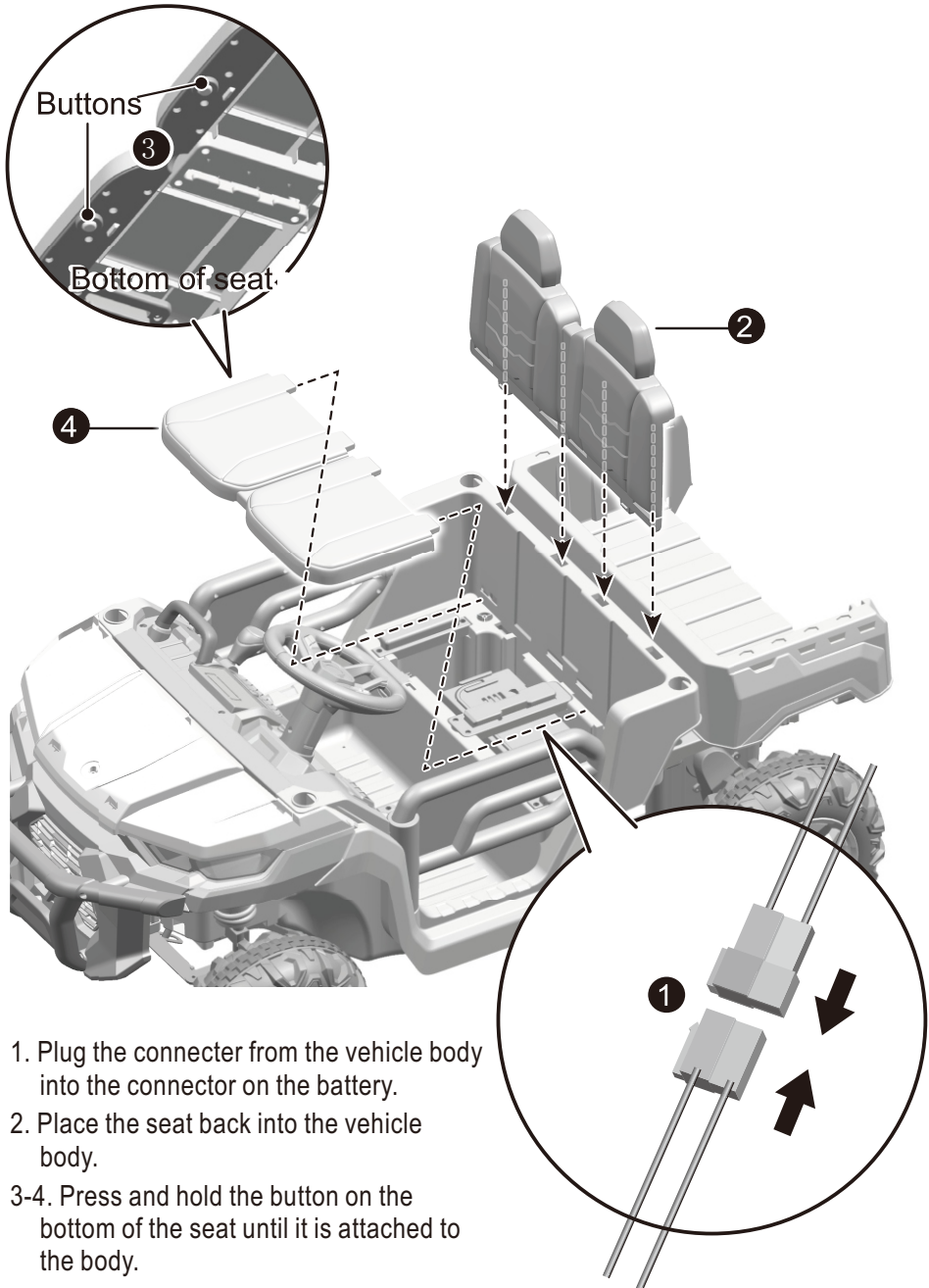


1. Plug the connector of the rear box to the connector from the body. Fit the rear gearbox onto the rear axle.
2. Place the driving wheel onto the rear axle.
3. Slide a $\text{\O}10$ washer onto the rear axle.
4. Tighten a locknut to the end of the rear axle with a spanner. Repeat for the other wheel.
5. 'Snap' the wheel covers to the wheels.

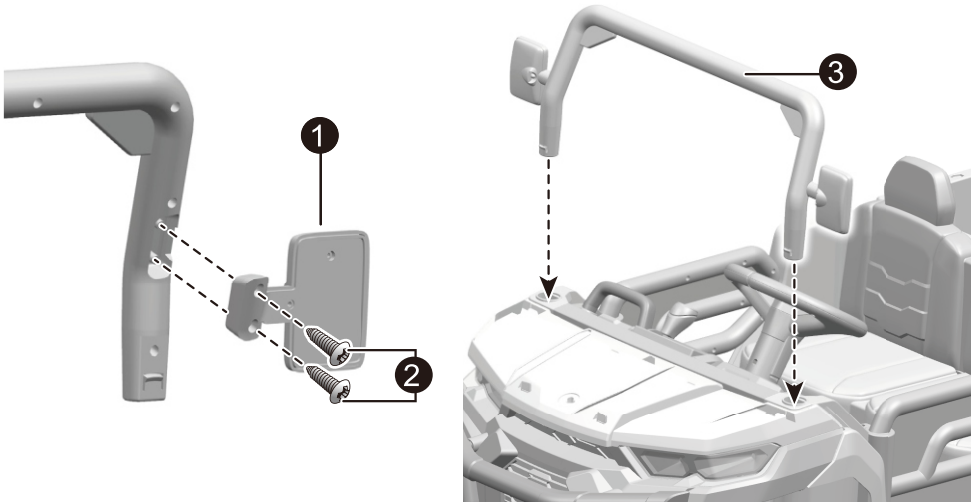


- 1-2. Fit the front bumper to the vehicle body, then insert four 4x14 black screws and tighten.
3. Insert the handle into the holes on the dash.
4. Plug the sound unit connector on the steering wheel into the connector on the body. Hide the connectors and wires into the steering wheel.
5. Fit the steering wheel to the steering wheel base on the body.
- 6-7. Line up the holes on the steering wheel with the holes on the steering wheels base, then insert the M5x40 machine screw. Fasten a nut on the opposite end of the screw with a screwdriver.

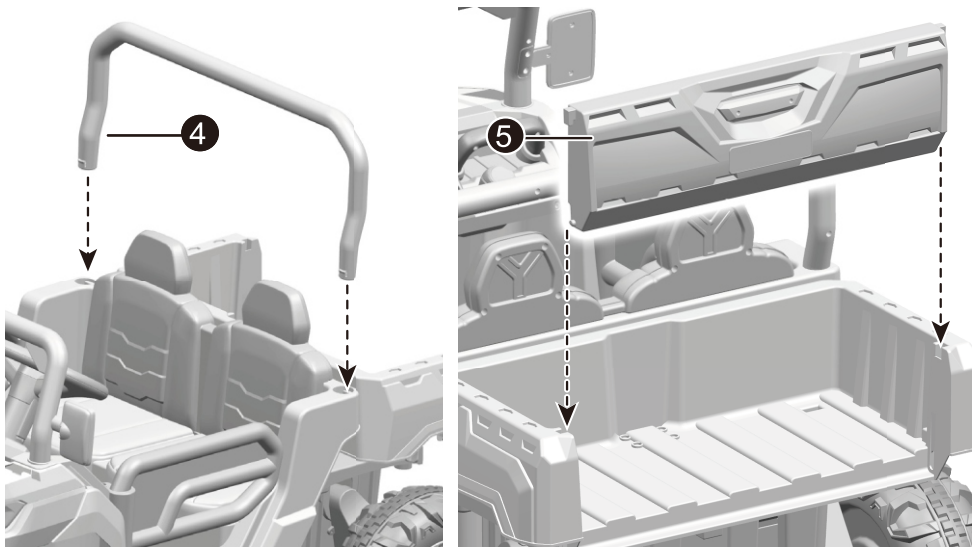


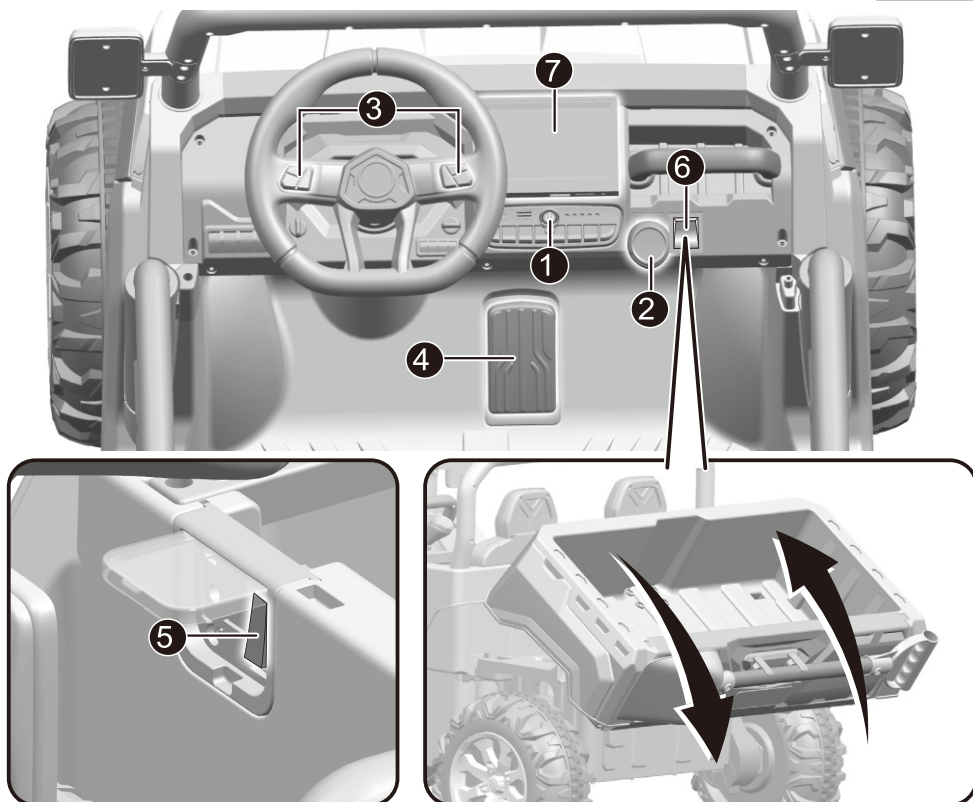


1. Plug the connector from the vehicle body into the connector on the battery.
2. Place the seat back into the vehicle body.
- 3-4. Press and hold the button on the bottom of the seat until it is attached to the body.

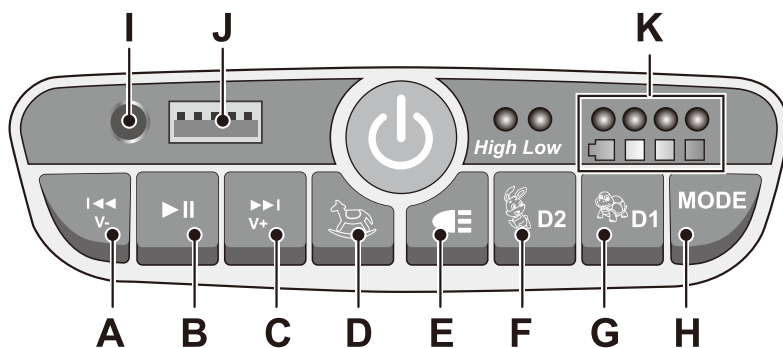


- 1-2. Insert the mirrors to the windshield. TIP: The mirrors only fit on the vehicle one way. Insert and tighten two $\text{\O}4 \times 14$ screws on each mirror.
3. Insert the tabs from the windshield into the holes on the vehicle body. Push until you hear it 'click' into place.
4. Insert the tabs of the roll bar into the holes on the vehicle body. Push until you hear it 'click' into place.
5. 'Click' the dump gate to the dump on the vehicle body.





1. Power button: Turn the product on and off.
2. Forward/stop/reverse lever: Changes the direction of the ride-on.
 - To move forward, shift the lever to top position.
 - To move backward, shift the lever to down position.
 - In the middle position, the ride-on will not move.
3. Sound button: Press for sound or horn.
4. Throttle pedal: Applies power (speed) to the ride-on.
 - To move the product, press down on the pedal.
 - To brake or slow down, release pressure from the pedal.
5. Pedal -R/C switch (if equipped): Change operating mode, throttle control or remote control.
6. Dump switch: Press the switch once to tip the dump. Quickly press twice to reset automatically after tipping.
7. Mp4 (if equipped).



A. Previous/ Hold to decrease volume.

B. Play/ hold to pause.

C. Skip/ Hold to increase volume.

D. On a 12V product – rocking button: Turn rocking mode on and off. Product will not move under this mode.

On 24V product – Bluetooth button.

E. Lights button: Turns the lights on and off.

F. High speed button: Operates the product to move at high speed.

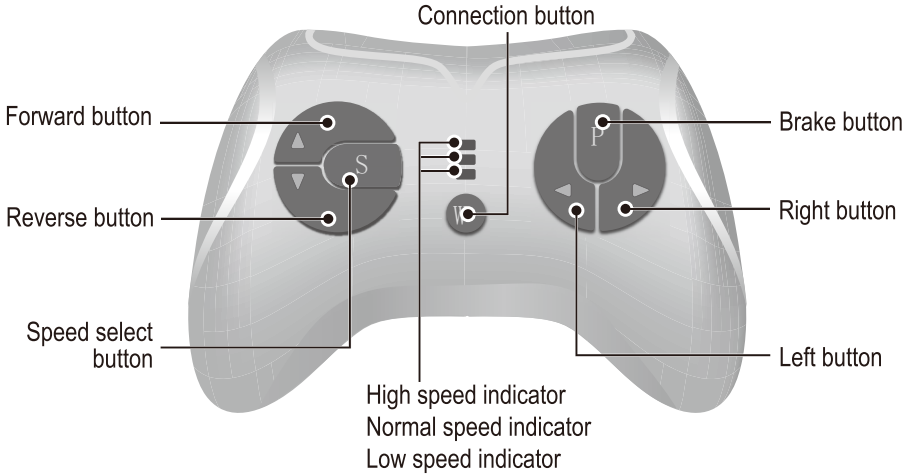
G. Low speed button: Operates the product to move at low speed.

H. Mode button: Change audio input.

I. Device input 1.

J. Device input 2.

K. Digital voltmeter : Displays battery level when the ride-on has stopped.



Inserting batteries

Lift the battery compartment cover, which is on the back of the controller, then insert two AAA (LR03) batteries.

NOTE: Batteries not included. Refer to battery information on page 1.

1. Connecting

Press the connection button for two seconds – the indicator will flash. Turn on the power switch on the vehicle dash. The status indicator will turn off for about two seconds, then turn on with a long bright light – the connection is successful. If the status indicator makes no response, the connection has failed. Replace the batteries and try again.

2. Brake button

Press to stop the vehicle. Press again to move.

3. Speed button

This button lets you choose between low, normal or high speed. NOTE: This button does not work in reverse.

NOTE:

- If no button is pressed for 10 seconds, the controller will shut down automatically.
- Reconnect the controller when replacing batteries.

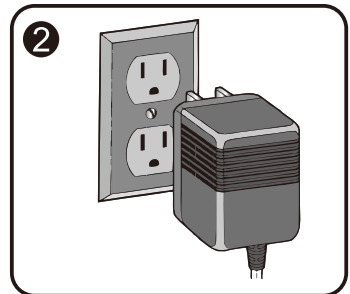
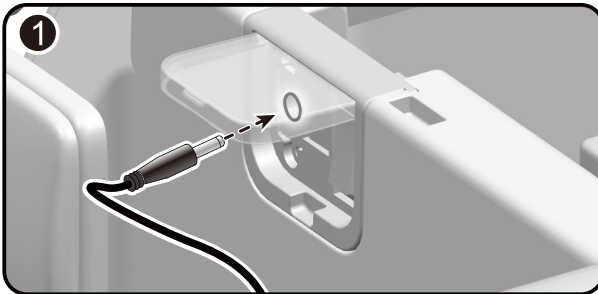
**WARNING!**

AN ADULT MUST CHARGE THE BATTERY!

**WARNING!**

This product has a **charging protection**: when charging, all functions will cut off.

- The power switch must be off when charging.
- Before the first use, charge the battery for 4-6 hours. Do not charge the battery for more than 10 hours to avoid overheating.
- When the vehicle runs slowly, charge the battery,
- After each use or at least once a month, charge the battery for 8-12 hours. Charging time should never exceed 20 hours.
- Only use the battery and charger supplied with this ride-on.
NEVER swap the battery or charger with another brand. Using a different battery or charger is a fire or explosion hazard.
- Do not use this battery or charger for any other product.

**How to charge the battery**

1. Open the charging cover (below the seat). Plug the charger port into the charger socket.
2. Plug the charger plug into a wall outlet. The battery will begin charging.

Problem	Possible Cause	Solution
Vehicle does not run	Battery low on power	Recharge battery.
	Thermal fuse has tripped	Reset fuse, see <Fuse>
	Battery connector or wires are loose	Check that the battery connectors are firmly plugged into each other. If wires are loose around the motor contact your distributor please.
	Battery is dead	Replace battery, contact your distributor please.
	Electrical system is damaged	Contact your distributor please.
	Motor is damaged	Contact your distributor please.
Vehicle does not run very long	Battery is not fully charged.	Check that the battery connectors are firmly plugged into each other when recharging
	Battery is old	Replace battery, contact your distributor please.
Vehicle runs sluggishly	Battery low on power	Recharge battery, contact your distributor please.
	Battery is old	Replace battery, contact your distributor please.
	The maximum load has been exceeded.	Reduce weight on vehicle.
	Vehicle is being used in harsh conditions	Avoid using vehicle in harsh conditions ,see <Safety>.
Vehicle needs a push to go forward	Loose wires or connectors.	Check the battery connectors are firmly plugged into each other. If wires are loose around the motor, please contact the distributor.
	"Dead Spot" on motor	'Dead spot' means the electric power is not being delivered to the terminal connection, which means the ride-on needs repairing. Please contact the distributor.
Difficult shifting from forward to reverse or vice-versa	Attempting to shift while the vehicle is motion	Ensure the vehicle is completely stopped, then shift. See 'Use your new ride-on'.
Loud grinding or clicking noises coming from motor or gear box	Motor or gears are damaged	Contact your distributor please.
Battery will not recharge	Battery connector or adapter connector is loose	Check the battery connectors are firmly plugged into each other.
	Charger not plugged in	Check the charger is plugged into a working wall outlet.
	Charger is not working	Please contact the distributor.
Charger feels warm when recharging	This is normal and not a cause for concern	

Completely read through this manual and the troubleshooting guide table before calling. If you still need help resolving the problem **Contact your distributor please.**

- It is the adult's responsibility to check main parts of this ride-on before using. It is important to regularly inspect the battery, charger, cable or cord and plug. Ensure screws are tightened. If any damages occur, do not use this ride-on until properly fixed.
- Ensure plastic parts of the vehicle are not cracked or broken.
- Occasionally use a lightweight oil to lubricate moving parts, such as the wheels.
- Park the vehicle indoors or cover with a tarp, so it is protected from wet weather.
- Keep this ride-on away from sources of heat, such as stoves and heaters – plastic parts could melt.
- Charge the battery after each use. Only an adult can handle the battery. When not being used, ensure the battery is charged at least once a month.
- Do not wash this ride-on with a hose or with soap and water. Do not drive in rainy or snowy conditions. Water will damage the motor, electric system and battery.
- Clean the vehicle with a soft, dry cloth. To keep plastic parts looking pristine, use a non-wax furniture polish. Do not use car wax or abrasive cleaners.
- Do not drive the vehicle in mud, sand or fine gravel – this could damage moving parts, motors or the electric system.
- When not using, ensure the ride-on is turned off and unplugged.

The battery has a thermal fuse with a reset fuse, which automatically cuts all power to the vehicle if the motor, electric system or battery overloads. The fuse will reset and power will be restored after the unit has been off for 20 seconds, the turned on. If the fuse trips repeatedly during normal use, the ride-on may need to be repaired. **Please contact the distributor.**

To avoid losing power, follow these guidelines:

- Do not overload the vehicle.
- Do not tow anything behind the vehicle.
- Do not drive up steep slopes.
- Do not drive into fixed objects, which may cause the wheels to spin, causing the motor to overheat.
- Do not drive in very hot weather, components may overheat.
- Keep water and other liquids away from the battery and other electrical components.
- Do not tamper with the electric system – this could trip the fuse.

Our products are suitable for ASTM F963; GB6675; EN71 and EN62115 standard.

Disposal Of Battery



- Your sealed lead-acid battery must be recycled or disposed of in an environmentally sound manner.
- Do not dispose of your lead-acid battery in a fire. The battery may explode or leak.
- Do not dispose of a lead-acid battery in your regular, household trash. The incineration, land filling or mixing of sealed lead-acid batteries with household trash is prohibited by law.

If you have any questions, please contact our customer care center. Our contact details are below:



0044-800-240-4004



enquiries@mhstar.co.uk

IMPORTER ADDRESS:
MH STAR UK LTD
Unit 27, Perivale Park,
Horsenden lane South
Perivale, UB6 7RH
MADE IN CHINA

