



INbma029V01\_GL

**845-060**



IMPORTANT, RETAIN FOR FUTURE REFERENCE: READ CAREFULLY

# ASSEMBLY & INSTRUCTION MANUAL

**PARTS**

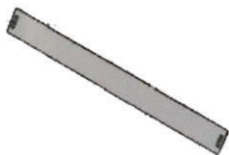
**A** x 1



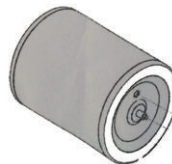
**B** x 1



**C** x 1

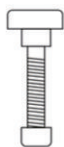


**D** x 1



**HARDWARE**

**E** x 4



**F** x 2



**G** x 2

