

# PawHut

INdId011\_GL

**D51-244**



IMPORTANT, RETAIN FOR FUTURE REFERENCE: READ CAREFULLY

## ASSEMBLY & INSTRUCTION MANUAL

① x 1



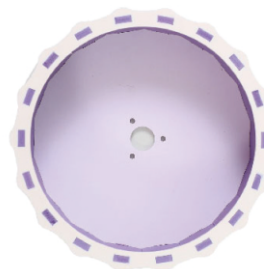
② x 1



③ x 1



④ x 1



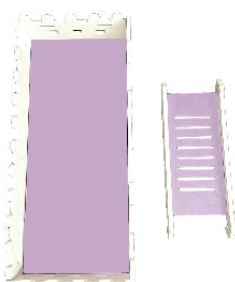
⑤ x 1



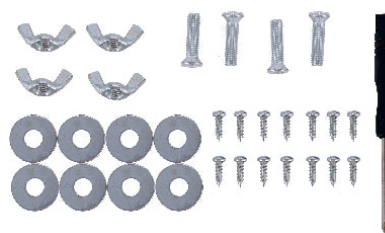
⑥ x 1



⑦ x 1



⑧ x 1

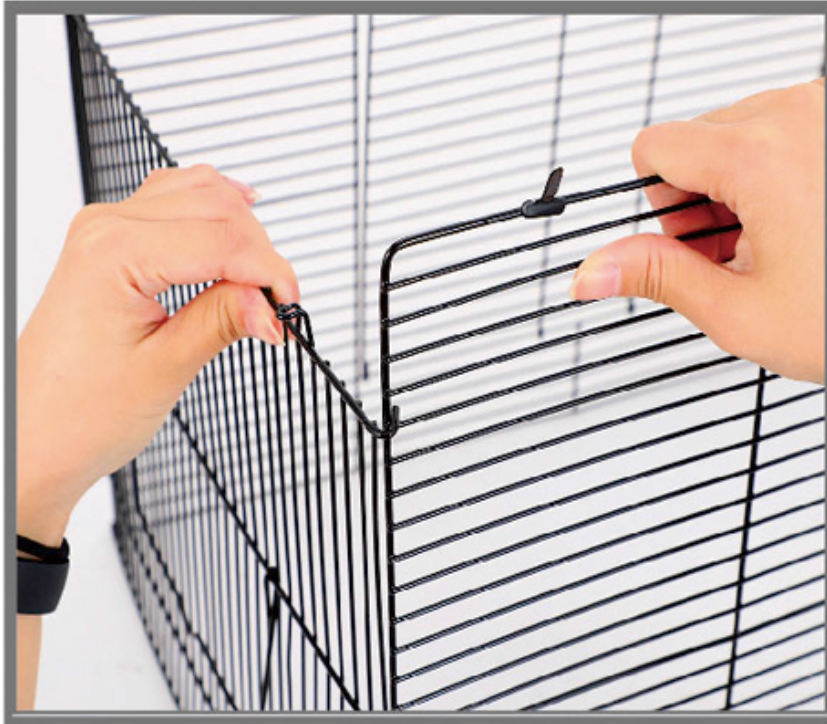


⑨ x 1



⑩ x 1

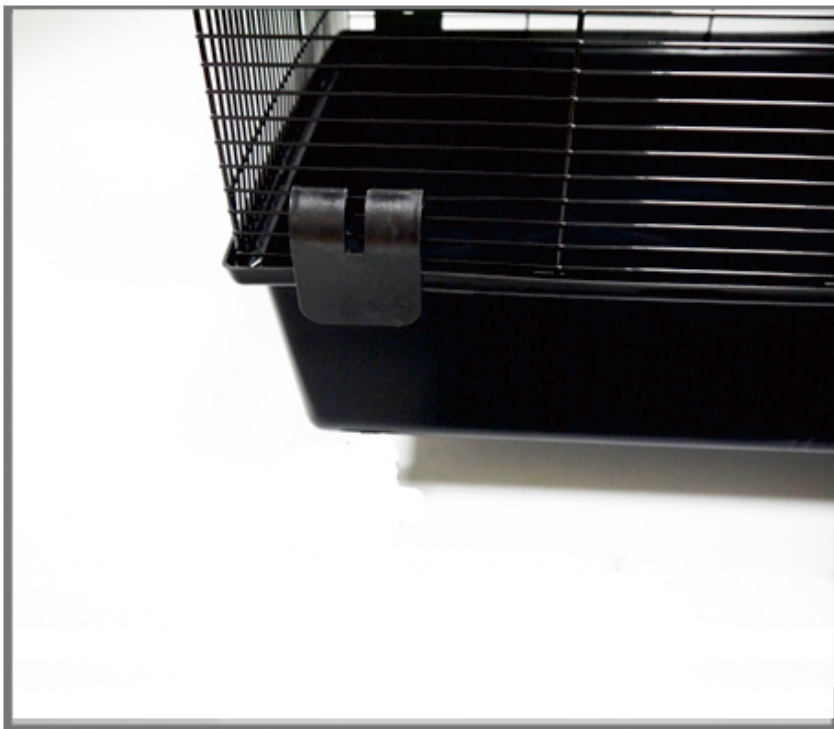




1. Put the wire together



2. Place the installed wire into the slot in the bottom basin

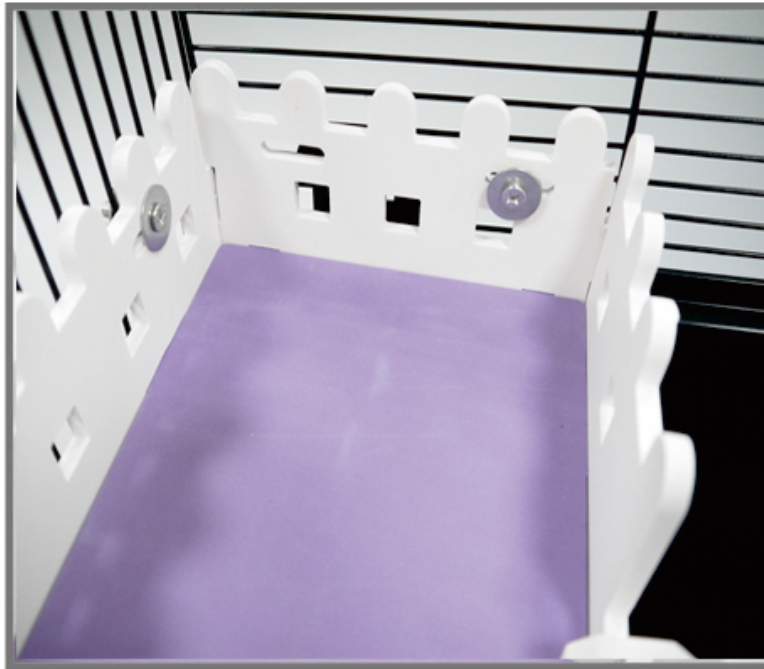


3. Fix with the buckle .



4. Assemble the water  
bottle





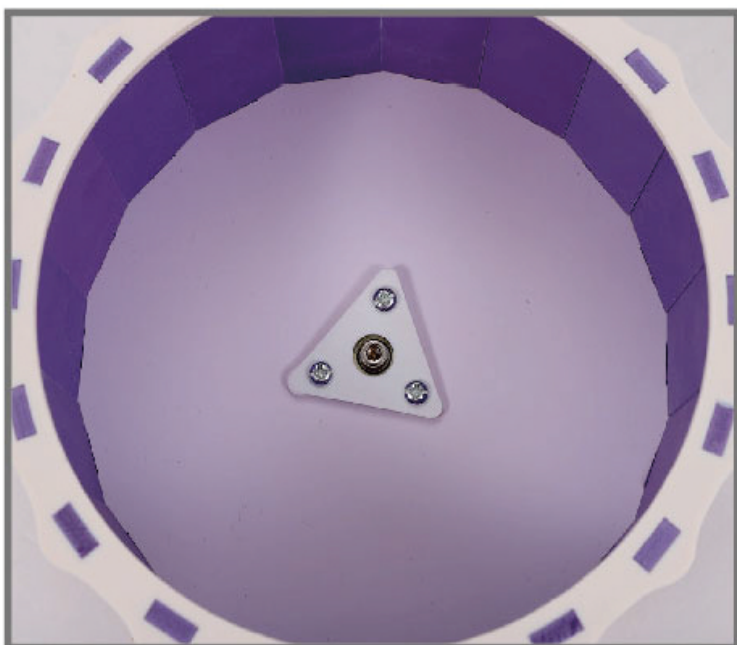
5. Fasten the platform with screws



6. Fasten the platform with screws



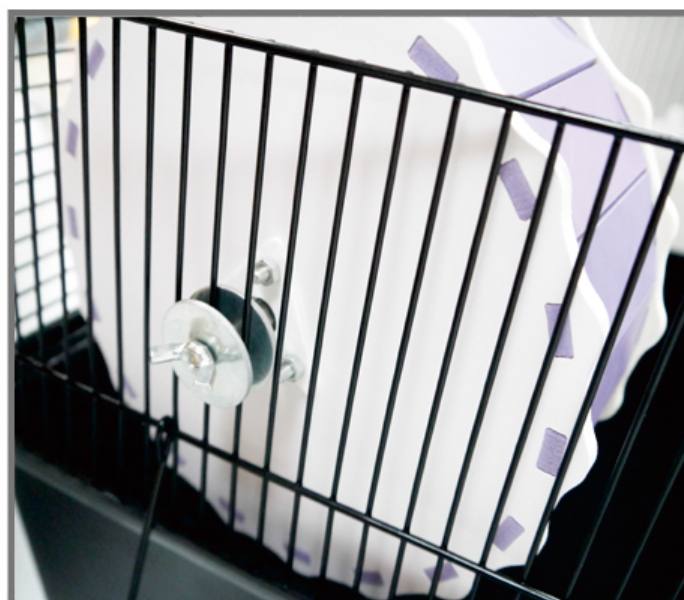
## 7. Accessories for running wheels



## 8. Install the screws into the triangle plate

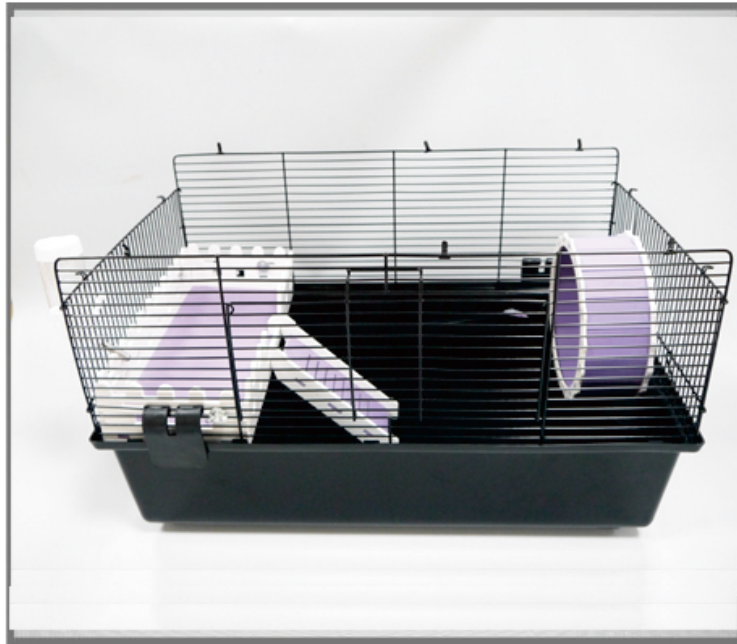


9. Place the round gasket into the screw bearing



10. Attach the running wheel to the wire and secure it





11. Put the bowl in to the cage



12. The finished product figure